

Spatial transcriptomic discovery of vascular phenotypes across COVID19 infected human tissues

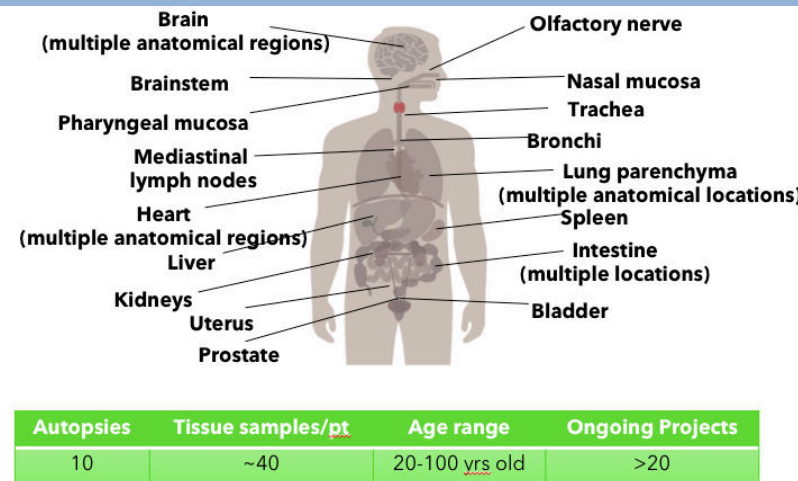
Kenny Roberts¹, Tong Li¹, Alexander Aivazidis¹, Sam Barnett², Vitalii Kleshchevnikov¹, Robin Fropf³, Sarah Warren³, Michael Osborne², Oli Stegle^{1,4,5}, Michela Nosedà², Omer Ali Bayraktar¹



¹ Wellcome Sanger Institute, Hinxton, UK, ² Imperial College London, London, UK
³ NanoString Technologies Inc., Seattle, WA, USA, ⁴ EMBL & DKFZ, Heidelberg, Germany

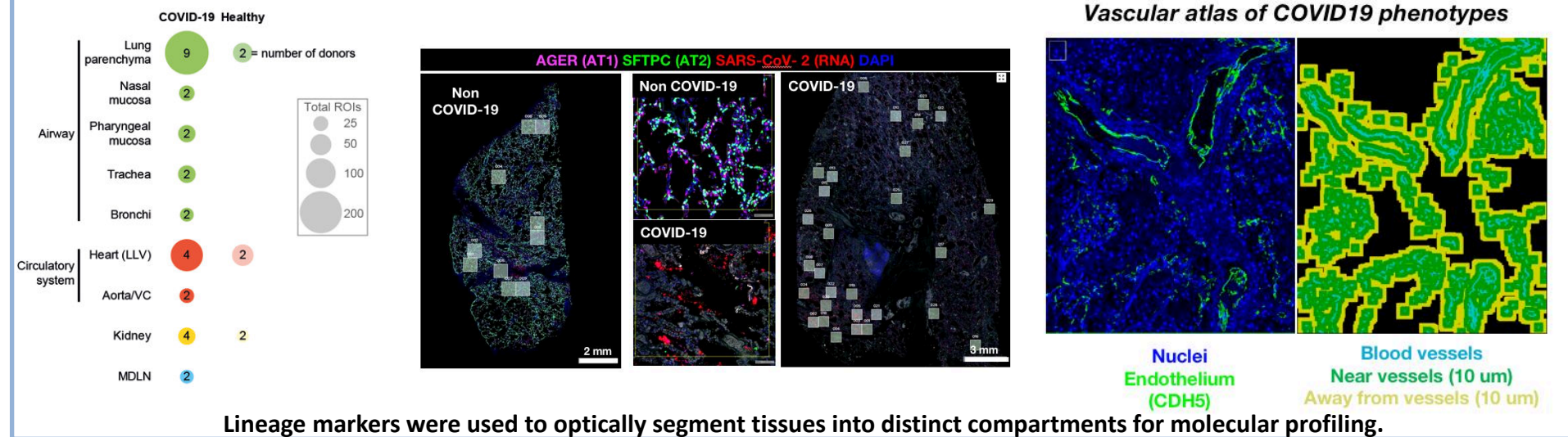


1. Imperial COVID-19 Post-mortem Biobank

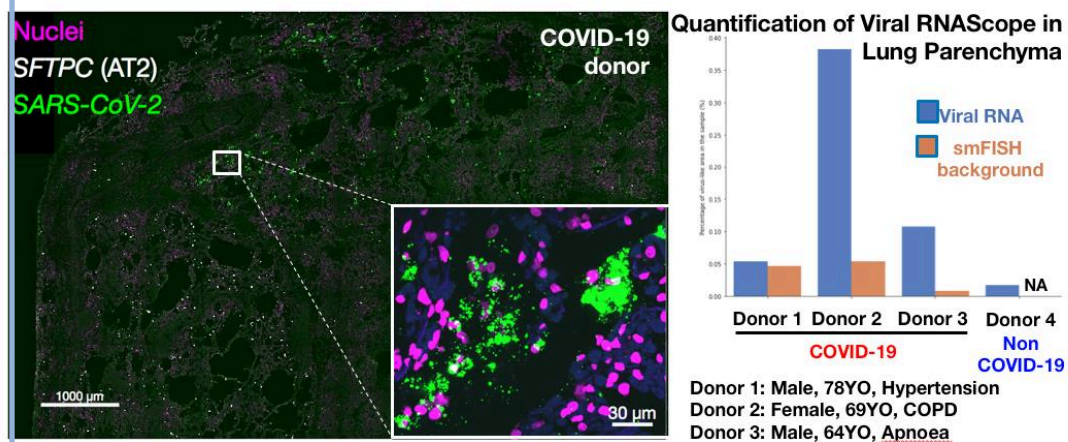


Largest collection of COVID-19 PM tissue profiled to date with GeoMx DSP

4. Cell type-specific WTA profiling across COVID-19 PM tissues

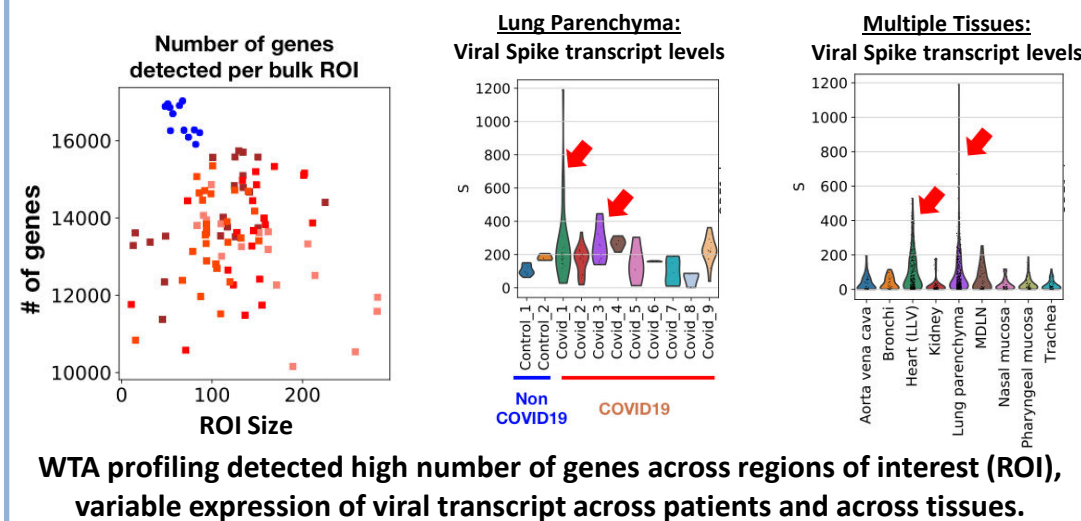


2. Variable viral loads across patient lungs *in situ*

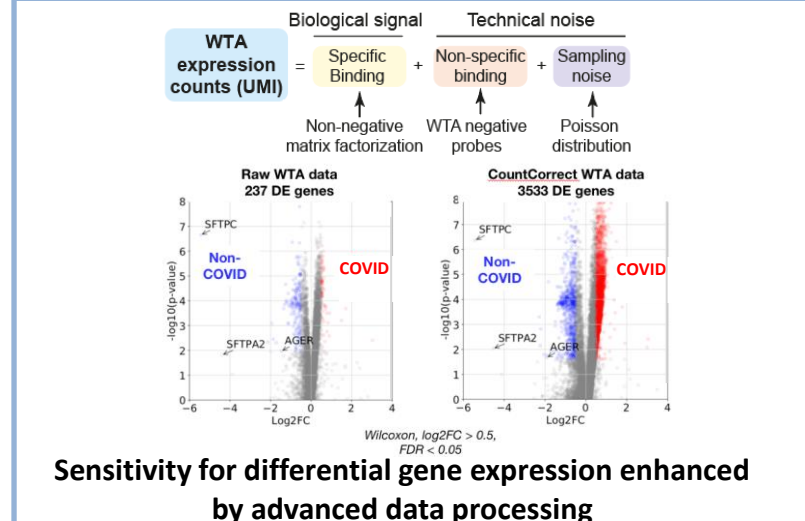


RNAScope probes for viral transcripts enable visualization of virus in tissues

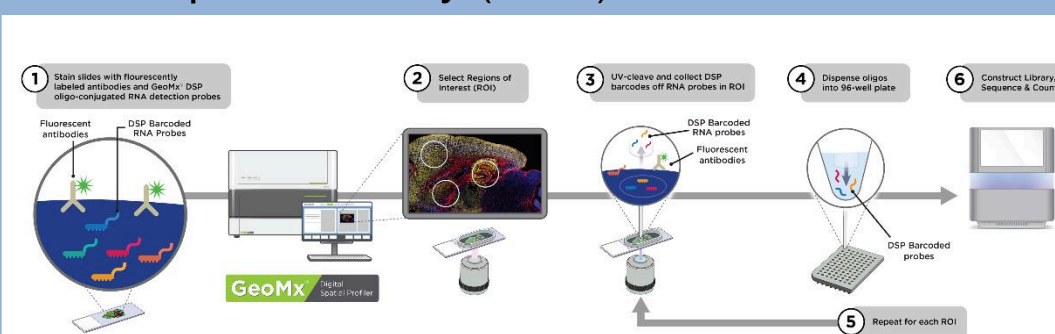
5. Variable viral loads measured by WTA



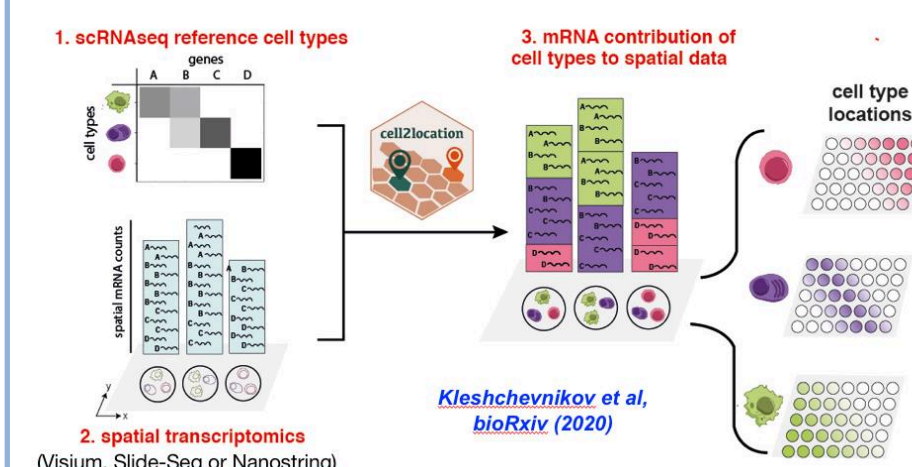
6. Noise removal by CountCorrect



3. GeoMx Digital Spatial Profiling Whole Transcriptome Assay (WTA) Workflow



FOR RESEARCH USE ONLY. Not for use in diagnostic procedures.



7. Cell type decomposition by Cell2location

