



AQP4

Water-specific channel

Antibody Information

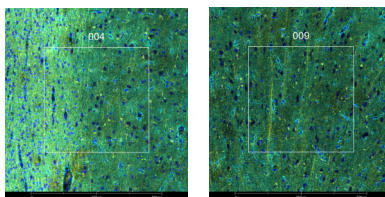
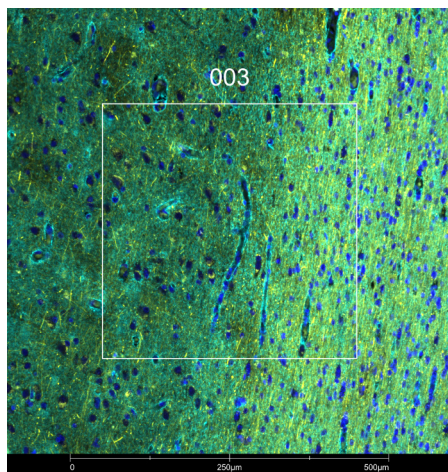
Clone ID	EPR24281-65
Fluorophore	AF488
Antibody Concentration	2 µg/mL
Mono or Polyclonal	Mono
Host & Isotype	Rabbit IgG
Lot Tested	GR3405744-1

Immunofluorescent Screening Information

Tissue Type	FFPE Human brain
Section Thickness	5 µm
HIER	10 min 100°C
Proteinase K Concentration	1 µg/mL
Fixation/Embedding	FFPE

Vendor Information

Vendor	Abcam
Catalog Number/Web Link	ab284135



The signal-to-noise ratio for this conjugate is not reliably high enough in our assay to allow for GeoMx segmentation. However, the expected staining pattern for AQP4 (cyan) in water-specific channels can still be observed by an experienced pathologist in human brain (all images) and used to place geometric ROIs.

Legend

AQP4: cyan
NEFH: yellow
SYTO83: blue

Stained Image Data

Exposure Time	300 ms
Signal-to-Noise	2.3
ROI Type	Geometric only

* Recommendations above are meant to act as a starting point for your own experimental optimization

For more information, please visit nanosttring.com/GeoMxDSP

NanoString Technologies, Inc.

530 Fairview Avenue North
Seattle, Washington 98109

T (888) 358-6266
F (206) 378-6288

[nanosttring.com](#)
[info@nanosttring.com](#)

Sales Contacts

United States [us.sales@nanosttring.com](#)
EMEA: [europe.sales@nanosttring.com](#)

Asia Pacific & Japan [apac.sales@nanosttring.com](#)
Other Regions [info@nanosttring.com](#)