



CD11c

Dendritic cells (antigen presenting)

Antibody Information

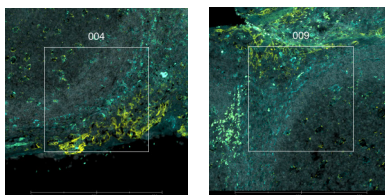
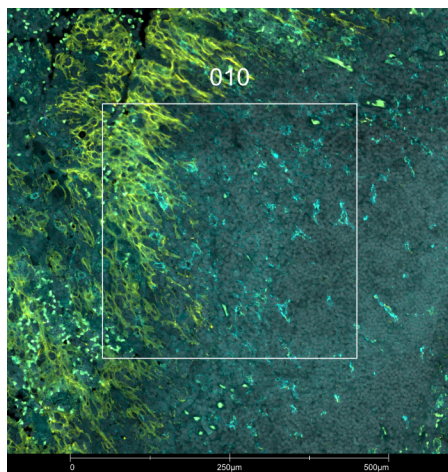
Clone ID	EP1347Y
Fluorophore	AF488
Antibody Concentration	10 µg/mL
Mono or Polyclonal	Mono
Host & Isotype	Rabbit IgG
Lot Tested	GR3369849-1

Immunofluorescent Screening Information

Tissue Type	FFPE Human tonsil
Section Thickness	5 µm
HIER	10 min 100°C
Proteinase K Concentration	1 µg/mL
Fixation/Embedding	FFPE

Vendor Information

Vendor	Abcam
Catalog Number/Web Link	ab275338



The signal-to-noise ratio for this conjugate is not reliably high enough in our assay to allow for GeoMx segmentation. However, the expected staining pattern for CD11c (cyan) in dendritic cells can still be observed by an experienced pathologist in human tonsil (all images) and used to place geometric ROIs.

Legend

CD11c: cyan
PD-L1: yellow
SYTO83: grey

Stained Image Data

Exposure Time	300 ms
Signal-to-Noise	2.5
ROI Type	Geometric only

* Recommendations above are meant to act as a starting point for your own experimental optimization

For more information, please visit nanosttring.com/GeoMxDSP

NanoString Technologies, Inc.

530 Fairview Avenue North
Seattle, Washington 98109

T (888) 358-6266
F (206) 378-6288

[nanosttring.com](#)
[info@nanosttring.com](#)

Sales Contacts

United States [us.sales@nanosttring.com](#)
EMEA: [europe.sales@nanosttring.com](#)

Asia Pacific & Japan [apac.sales@nanosttring.com](#)
Other Regions [info@nanosttring.com](#)