



CD68

Macrophages

Antibody Information

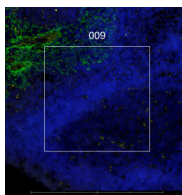
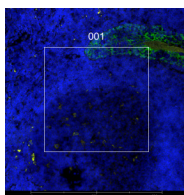
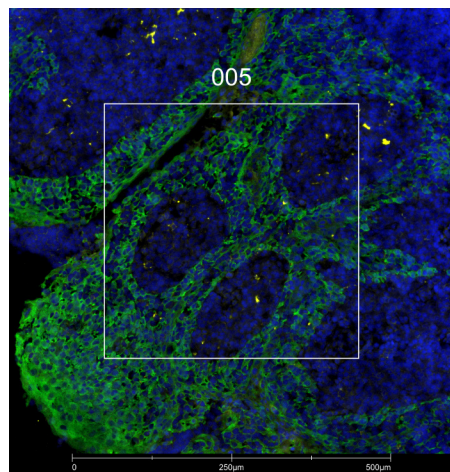
Clone ID	C68/684
Fluorophore	AF488
Antibody Concentration	5 µg/mL
Mono or Polyclonal	Mono
Host & Isotype	Mouse IgG1 Kappa
Lot Tested	968-2PABX211201-120621-AF488

Immunofluorescent Screening Information

Tissue Type	FrF Human tonsil
Section Thickness	5 µm
HIER	10 min 100°C
Proteinase K Concentration	1 µg/mL
Fixation/Embedding	fresh frozen / OCT

Vendor Information

Vendor	Novus
Catalog Number/Web Link	NBP2-34587AF488



Legend

CD68: yellow
KRT: green
SYTO83: blue

The signal-to-noise ratio for this conjugate is not reliably high enough in our assay to allow for GeoMx segmentation. However, the expected staining pattern for CD68 (yellow) in macrophages can still be observed by an experienced pathologist in human tonsil (all images) and used to place geometric ROIs.

Stained Image Data

Exposure Time	300 ms
Signal-to-Noise	2.1
ROI Type	Geometric only

* Recommendations above are meant to act as a starting point for your own experimental optimization

For more information, please visit nanosttring.com/GeoMxDSP

NanoString Technologies, Inc.

530 Fairview Avenue North
Seattle, Washington 98109

T (888) 358-6266
F (206) 378-6288

nanosttring.com
info@nanosttring.com

Sales Contacts

United States us.sales@nanosttring.com
EMEA: europe.sales@nanosttring.com

Asia Pacific & Japan apac.sales@nanosttring.com
Other Regions info@nanosttring.com