



Mbp

Myelin Basic Protein, all neurons

Antibody Information

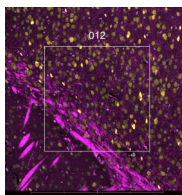
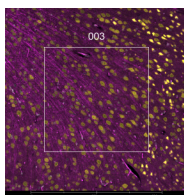
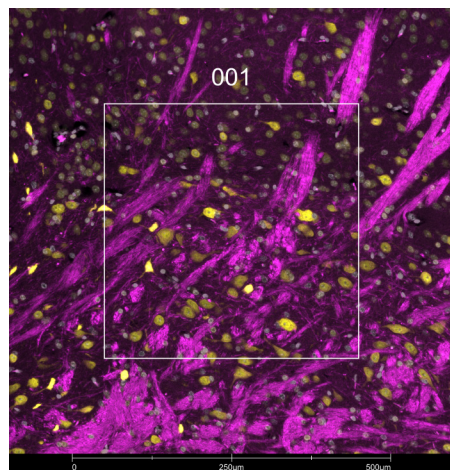
Clone ID	P82H9
Fluorophore	AF488
Antibody Concentration	0.5 µg/mL
Mono or Polyclonal	Mono
Host & Isotype	Mouse IgG1 Kappa
Lot Tested	B279116

Immunofluorescent Screening Information

Tissue Type	FFPE Mouse brain
Section Thickness	5 µm
HIER	10 min 100°C
Proteinase K Concentration	1 µg/mL
Fixation/Embedding	FFPE

Vendor Information

Vendor	BioLegend
Catalog Number/Web Link	850907



The signal-to-noise ratio for this conjugate is not reliably high enough in our assay to allow for GeoMx segmentation. However, the expected staining pattern for Mbp (magenta) in neurons can still be observed by an experienced pathologist in mouse brain (all images) and used to place geometric ROIs.

Legend

Mbp: magenta
SYTO83: grey
Elavl4: yellow

Stained Image Data

Exposure Time	200 ms
Signal-to-Noise	2.8
ROI Type	Geometric only

* Recommendations above are meant to act as a starting point for your own experimental optimization

For more information, please visit nanosttring.com/GeoMxDSP

NanoString Technologies, Inc.

530 Fairview Avenue North
Seattle, Washington 98109

T (888) 358-6266
F (206) 378-6288

nanosttring.com
info@nanosttring.com

Sales Contacts

United States us.sales@nanosttring.com
EMEA: europe.sales@nanosttring.com

Asia Pacific & Japan apac.sales@nanosttring.com
Other Regions info@nanosttring.com