



Mbp

Myelin Basic Protein, all neurons

Antibody Information

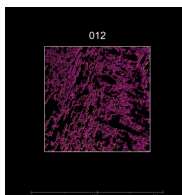
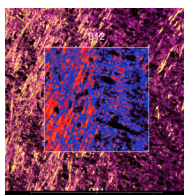
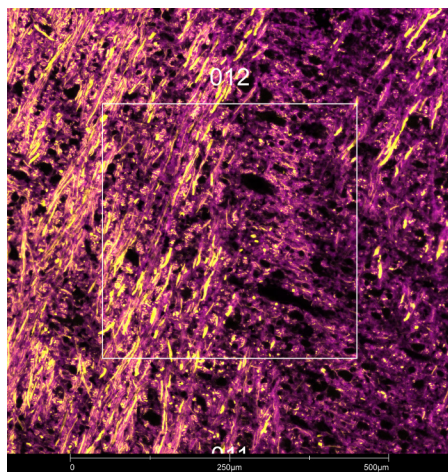
Clone ID	P82H9
Fluorophore	AF647
Antibody Concentration	0.5 µg/mL
Mono or Polyclonal	Mono
Host & Isotype	Mouse IgG1 Kappa
Lot Tested	B281123

Immunofluorescent Screening Information

Tissue Type	FrF Mouse brain
Section Thickness	5 µm
HIER	10 min 100°C
Proteinase K Concentration	1 µg/mL
Fixation/Embedding	fresh frozen / OCT

Vendor Information

Vendor	BioLegend
Catalog Number/Web Link	850909



Mbp (magenta) localizes to neurons in mouse brain (left image). The expression pattern of the Mbp+ neurons can be isolated from Nefh+ intermediate filaments (yellow) through GeoMx segmentation (right image).

Legend

Mbp: magenta Nefh: yellow
SYTO13: grey
Segmentation for Mbp: blue
Segmentation for Nefh: red

Stained Image Data

Exposure Time	200 ms
Signal-to-Noise	5.8
ROI Type	Geometric or Segmented

* Recommendations above are meant to act as a starting point for your own experimental optimization

For more information, please visit nanosttring.com/GeoMxDSP

NanoString Technologies, Inc.

530 Fairview Avenue North
Seattle, Washington 98109

T (888) 358-6266
F (206) 378-6288

nanosttring.com
info@nanosttring.com

Sales Contacts

United States us.sales@nanosttring.com
EMEA: europe.sales@nanosttring.com

Asia Pacific & Japan apac.sales@nanosttring.com
Other Regions info@nanosttring.com