



Tubb3

Microtubules; Neurons

Antibody Information

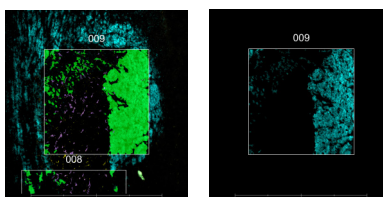
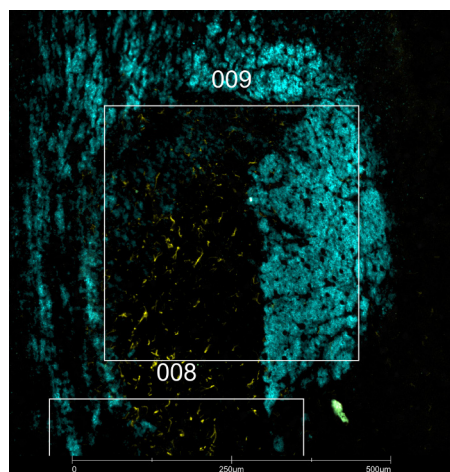
Clone ID	AA10
Fluorophore	AF647
Antibody Concentration	1 µg/mL
Mono or Polyclonal	Mono
Host & Isotype	Mouse IgG2a kappa
Lot Tested	B323063

Immunofluorescent Screening Information

Tissue Type	FrF Mouse brain
Section Thickness	5 µm
HIER	10 min 100°C
Proteinase K Concentration	1 µg/mL
Fixation/Embedding	fresh frozen / OCT

Vendor Information

Vendor	BioLegend
Catalog Number/Web Link	657405



Tubb3 (cyan) localizes to microtubules in mouse brain (left image). The expression pattern of the Tubb3+ microtubules can be isolated from Gfap+ astrocytes (yellow) through GeoMx segmentation (right image).

Legend

Tubb3: cyan Gfap: yellow
 SYTO83: grey
 Segmentation for Tubb3: green
 Segmentation for Gfap: purple

Stained Image Data

Exposure Time	300 ms
Signal-to-Noise	3.3
ROI Type	Geometric or Segmented

* Recommendations above are meant to act as a starting point for your own experimental optimization

For more information, please visit nanosttring.com/GeoMxDSP

NanoString Technologies, Inc.

530 Fairview Avenue North
 Seattle, Washington 98109

T (888) 358-6266
 F (206) 378-6288

nanosttring.com
info@nanosttring.com

Sales Contacts

United States us.sales@nanosttring.com
 EMEA: europe.sales@nanosttring.com

Asia Pacific & Japan apac.sales@nanosttring.com
 Other Regions info@nanosttring.com