



CD163

M2 macrophages and monocytes

Antibody Information

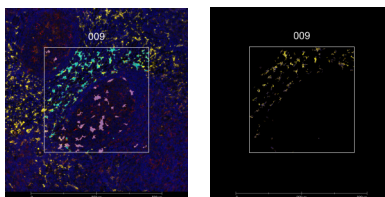
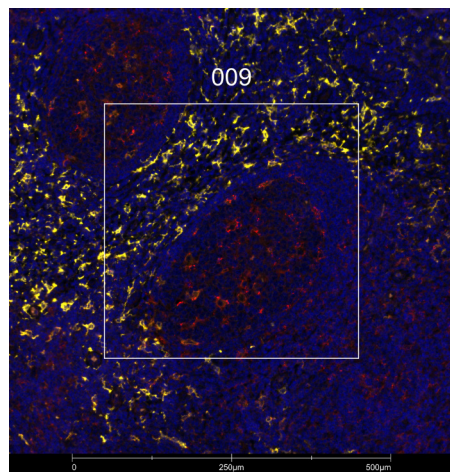
Clone ID	EPR19518
Fluorophore	AF594
Antibody Concentration	6 µg/mL
Mono or Polyclonal	Mono
Host & Isotype	Rabbit IgG
Lot Tested	GR3396803-6

Immunofluorescent Screening Information

Tissue Type	Hs tonsil
Section Thickness	5 µm
HIER	10 min 100°C
Proteinase K Concentration	1 µg/mL
Fixation/Embedding	FFPE

Vendor Information

Vendor	Abcam
Catalog Number/Web Link	ab282114



CD163 (yellow) localizes to M2 macrophages and monocytes in human tonsil (left image). The expression pattern of these CD163+ M2 macrophages and monocytes can be isolated from PD-L1+ B and T cells (red) through GeoMx segmentation (right image).

Legend

CD163: yellow PD-L1: red
SYTO13: blue
Segmentation for CD163: blue
Segmentation for PD-L1: purple

Stained Image Data

Exposure Time	300 ms
Signal-to-Noise	9.7
ROI Type	Geometric or Segmented

* Recommendations above are meant to act as a starting point for your own experimental optimization

For more information, please visit nanosttring.com/GeoMxDSP

NanoString Technologies, Inc.

530 Fairview Avenue North
Seattle, Washington 98109

T (888) 358-6266
F (206) 378-6288

nanosttring.com
info@nanosttring.com

Sales Contacts

United States us.sales@nanosttring.com
EMEA: europe.sales@nanosttring.com

Asia Pacific & Japan apac.sales@nanosttring.com
Other Regions info@nanosttring.com