



CD20

B cells

Antibody Information

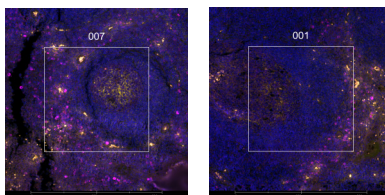
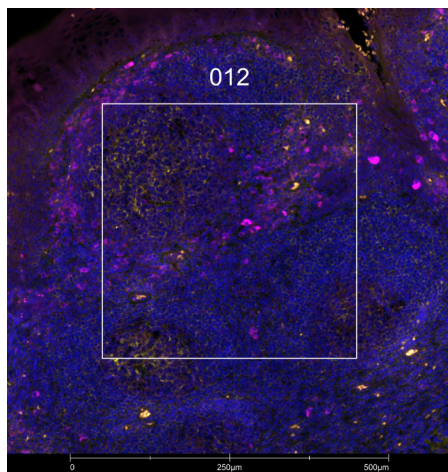
Clone ID	IGEL/773
Fluorophore	AF488
Antibody Concentration	6 µg/mL
Mono or Polyclonal	Mono
Host & Isotype	Mouse IgG2a kappa
Lot Tested	931-3PABX210913-091521-af488

Immunofluorescent Screening Information

Tissue Type	Hs tonsil, lymph node
Section Thickness	5 µm
HIER	10 min 100°C
Proteinase K Concentration	1 µg/mL
Fixation/Embedding	FFPE

Vendor Information

Vendor	Novus
Catalog Number/Web Link	NBP2-47840AF488



The signal-to-noise ratio for this conjugate is not reliably high enough in our assay to allow for GeoMx segmentation. However, the expected staining pattern for CD20 (yellow) in B cells can still be observed by an experienced pathologist in human tonsil (all images) and used to place geometric ROIs.

Legend

CD20: yellow
SYTO83: blue

CD11b: magenta

Stained Image Data

Exposure Time	300 ms
Signal-to-Noise	2.7
ROI Type	Geometric only

* Recommendations above are meant to act as a starting point for your own experimental optimization

For more information, please visit nanosttring.com/GeoMxDSP

NanoString Technologies, Inc.

530 Fairview Avenue North
Seattle, Washington 98109

T (888) 358-6266
F (206) 378-6288

nanosttring.com
info@nanosttring.com

Sales Contacts

United States us.sales@nanosttring.com
EMEA: europe.sales@nanosttring.com

Asia Pacific & Japan apac.sales@nanosttring.com
Other Regions info@nanosttring.com