



# CD4

## Most thymocytes

### Antibody Information

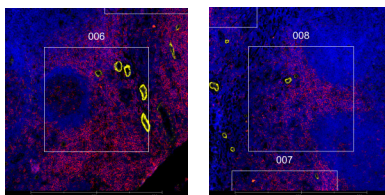
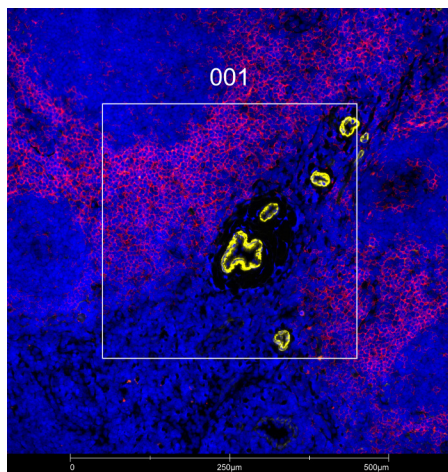
Clone ID	EPR6855
Fluorophore	AF647
Antibody Concentration	1 µg/mL
Mono or Polyclonal	Mono
Host & Isotype	Rabbit IgG
Lot Tested	GR3400639-3

### Immunofluorescent Screening Information

Tissue Type	Hs tonsil
Section Thickness	5 µm
HIER	10 min 100°C
Proteinase K Concentration	1 µg/mL
Fixation/Embedding	fresh frozen / OCT

### Vendor Information

Vendor	Abcam
Catalog Number/Web Link	<a href="#">ab196147</a>



The signal-to-noise ratio for this conjugate is not reliably high enough in our assay to allow for GeoMx segmentation. However, the expected staining pattern for CD4 (red) in most thymocytes can still be observed by an experienced pathologist in human tonsil (all images) and used to place geometric ROIs.

### Legend

CD4: red  
SYTO83: blue

ACTA2: yellow

### Stained Image Data

Exposure Time	300 ms
Signal-to-Noise	2.8
ROI Type	Geometric only

\* Recommendations above are meant to act as a starting point for your own experimental optimization

For more information, please visit [nanosttring.com/GeoMxDSP](https://nanosttring.com/GeoMxDSP)

#### NanoString Technologies, Inc.

530 Fairview Avenue North  
Seattle, Washington 98109

T (888) 358-6266  
F (206) 378-6288

[nanosttring.com](https://nanosttring.com)  
[info@nanosttring.com](mailto:info@nanosttring.com)

#### Sales Contacts

United States [us.sales@nanosttring.com](mailto:us.sales@nanosttring.com)  
EMEA: [europe.sales@nanosttring.com](mailto:europe.sales@nanosttring.com)

Asia Pacific & Japan [apac.sales@nanosttring.com](mailto:apac.sales@nanosttring.com)  
Other Regions [info@nanosttring.com](mailto:info@nanosttring.com)