



CD57 / B3GAT1

NK cells, CD8+ T cells, neural cells, striated muscle

Antibody Information

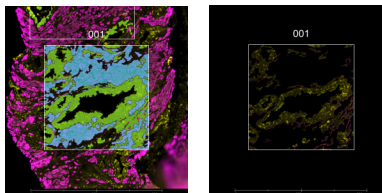
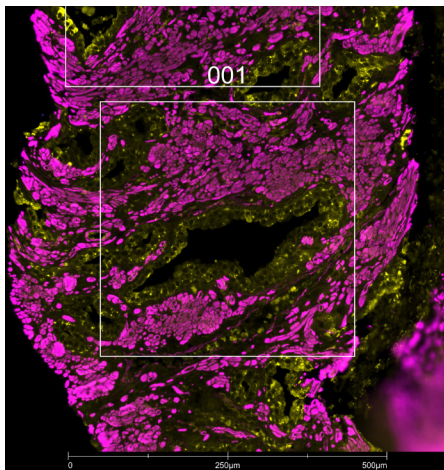
| | |
|------------------------|-----------------|
| Clone ID | HNK-1 |
| Fluorophore | FITC |
| Antibody Concentration | 2 µg/mL |
| Mono or Polyclonal | Mono |
| Host & Isotype | Mouse IgM Kappa |
| Lot Tested | B314061 |

Immunofluorescent Screening Information

| | |
|----------------------------|---------------------------------|
| Tissue Type | Hs prostate, brain (cerebellum) |
| Section Thickness | 5 µm |
| HIER | 10 min 100°C |
| Proteinase K Concentration | 1 µg/mL |
| Fixation/Embedding | FFPE |

Vendor Information

| | |
|-------------------------|------------------------|
| Vendor | BioLegend |
| Catalog Number/Web Link | 359603 |



CD57 (yellow) localizes to peripheral lymphocytes and glandular cells in human prostate (left image). The expression pattern of these CD57+ glandular cells can be isolated from ACTA2+ smooth muscle cells (magenta) through GeoMx segmentation (right image).

Legend

CD57: yellow ACTA2: magenta
SYTO83: blue
Segmentation for CD57: green
Segmentation for ACTA2: blue

Stained Image Data

| | |
|-----------------|------------------------|
| Exposure Time | 300 ms |
| Signal-to-Noise | 3.8 |
| ROI Type | Geometric or Segmented |

* Recommendations above are meant to act as a starting point for your own experimental optimization

For more information, please visit nanosttring.com/GeoMxDSP

NanoString Technologies, Inc.

530 Fairview Avenue North
Seattle, Washington 98109

T (888) 358-6266
F (206) 378-6288

nanosttring.com
info@nanosttring.com

Sales Contacts

United States us.sales@nanosttring.com
EMEA: europe.sales@nanosttring.com

Asia Pacific & Japan apac.sales@nanosttring.com
Other Regions info@nanosttring.com