



C-Kit / CD117

Variety of tumor cells, differentiating GI stromal tumors

Antibody Information

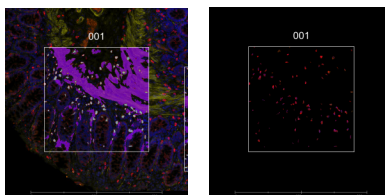
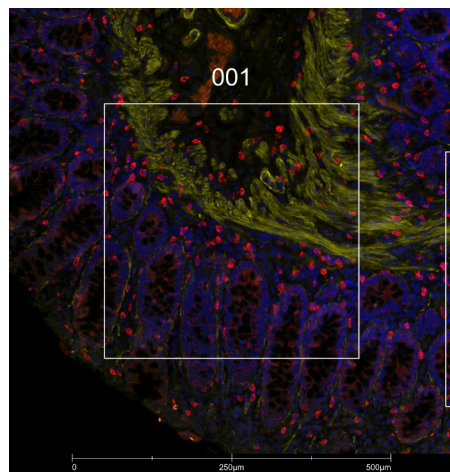
Clone ID	351
Fluorophore	AF647
Antibody Concentration	1 µg/mL
Mono or Polyclonal	Mono
Host & Isotype	Rabbit IgG
Lot Tested	D106304

Immunofluorescent Screening Information

Tissue Type	Hs breast, fallopian tube, colon, prostate
Section Thickness	5 µm
HIER	10 min 100°C
Proteinase K Concentration	1 µg/mL
Fixation/Embedding	FFPE

Vendor Information

Vendor	Novus
Catalog Number/Web Link	NBP2-90037AF647



C-Kit (red) localizes to mucosal lymphoid cells in human colon (left image). The expression pattern of these C-Kit+ mucosal lymphoid cells can be isolated from MYH11+ smooth muscle (yellow) through GeoMx segmentation (right image).

Legend

C-Kit: red
 MYH11: yellow
 SYTO83: blue
 Segmentation for C-Kit: cyan
 Segmentation for MYH11: purple

Stained Image Data

Exposure Time	300 ms
Signal-to-Noise	2.4
ROI Type	Geometric only

* Recommendations above are meant to act as a starting point for your own experimental optimization

For more information, please visit nanosttring.com/GeoMxDSP

NanoString Technologies, Inc.

530 Fairview Avenue North
 Seattle, Washington 98109

T (888) 358-6266
 F (206) 378-6288

nanosttring.com
info@nanosttring.com

Sales Contacts

United States us.sales@nanosttring.com
 EMEA: europe.sales@nanosttring.com

Asia Pacific & Japan apac.sales@nanosttring.com
 Other Regions info@nanosttring.com