



# GFAP

## Glial Fibrillary Acidic Protein in Mature Astrocytes

### Antibody Information

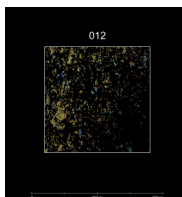
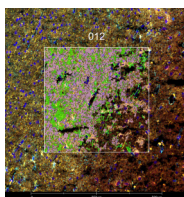
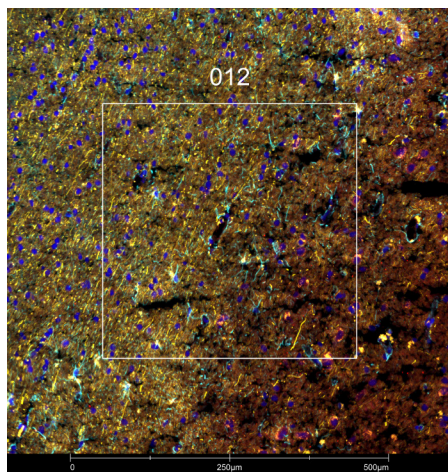
Clone ID	2E1.E9
Fluorophore	AF594
Antibody Concentration	2 µg/mL
Mono or Polyclonal	Mono
Host & Isotype	Mouse IgG2b
Lot Tested	B305191

### Immunofluorescent Screening Information

Tissue Type	Hs brain
Section Thickness	5 µm
HIER	10 min 100°C
Proteinase K Concentration	1 µg/mL
Fixation/Embedding	fresh frozen / OCT

### Vendor Information

Vendor	BioLegend
Catalog Number/Web Link	<a href="#">644708</a>



GFAP (cyan) localizes to astrocytes in human brain (left image). The expression pattern of these GFAP+ astrocytes can be isolated from OLIG2+ oligodendrocytes (red) and NEFH+ intermediate filaments (yellow) through GeoMx segmentation (right image).

### Legend

GFAP: cyan      OLIG2: red  
NEFH: yellow      SYTO83: blue  
Segmentation for GFAP: green  
Segmentation for OLIG2: orange  
Segmentation for NEFH: purple

### Stained Image Data

Exposure Time	200 ms
Signal-to-Noise	7.6
ROI Type	Geometric or Segmented

\* Recommendations above are meant to act as a starting point for your own experimental optimization

For more information, please visit [nanosttring.com/GeoMxDSP](https://nanosttring.com/GeoMxDSP)

#### NanoString Technologies, Inc.

530 Fairview Avenue North  
Seattle, Washington 98109

T (888) 358-6266  
F (206) 378-6288

[nanosttring.com](https://nanosttring.com)  
[info@nanosttring.com](mailto:info@nanosttring.com)

#### Sales Contacts

United States [us.sales@nanosttring.com](mailto:us.sales@nanosttring.com)  
EMEA: [europe.sales@nanosttring.com](mailto:europe.sales@nanosttring.com)

Asia Pacific & Japan [apac.sales@nanosttring.com](mailto:apac.sales@nanosttring.com)  
Other Regions [info@nanosttring.com](mailto:info@nanosttring.com)