



# MYH11

## Smooth muscle

### Antibody Information

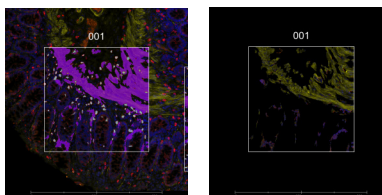
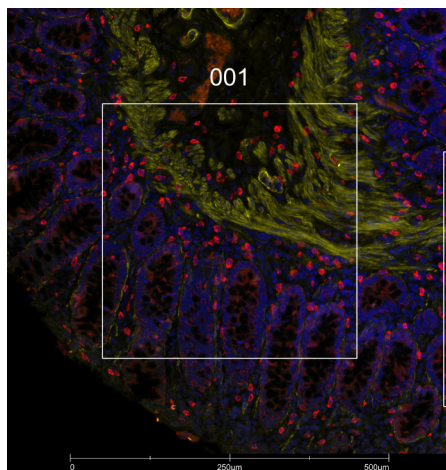
Clone ID	EPR5336B
Fluorophore	AF488
Antibody Concentration	5 µg/mL
Mono or Polyclonal	Mono
Host & Isotype	Rabbit IgG
Lot Tested	GR231682-2

### Immunofluorescent Screening Information

Tissue Type	Hs breast, fallopian tube, tonsil, skin, colon, prostate
Section Thickness	5 µm
HIER	10 min 100°C
Proteinase K Concentration	1 µg/mL
Fixation/Embedding	FFPE

### Vendor Information

Vendor	Abcam
Catalog Number/Web Link	<a href="#">ab197524</a>



MYH11 (yellow) localizes to smooth muscle in human colon (left image). The expression pattern of the MYH11+ smooth muscle (yellow) can be isolated from C-Kit+ mucosal lymphoid cells (red) through GeoMx segmentation (right image).

### Legend

MYH11: yellow      C-Kit: red  
SYTO83: blue  
Segmentation for MYH11: purple  
Segmentation for C-Kit: cyan

### Stained Image Data

Exposure Time	300 ms
Signal-to-Noise	7.5
ROI Type	Geometric or Segmented

\* Recommendations above are meant to act as a starting point for your own experimental optimization

For more information, please visit [nanosttring.com/GeoMxDSP](https://nanosttring.com/GeoMxDSP)

#### NanoString Technologies, Inc.

530 Fairview Avenue North  
Seattle, Washington 98109

T (888) 358-6266  
F (206) 378-6288

[nanosttring.com](https://nanosttring.com)  
[info@nanosttring.com](mailto:info@nanosttring.com)

#### Sales Contacts

United States [us.sales@nanosttring.com](mailto:us.sales@nanosttring.com)  
EMEA: [europe.sales@nanosttring.com](mailto:europe.sales@nanosttring.com)

Asia Pacific & Japan [apac.sales@nanosttring.com](mailto:apac.sales@nanosttring.com)  
Other Regions [info@nanosttring.com](mailto:info@nanosttring.com)