



Mbp

Myelin Basic Protein, all neurons

Antibody Information

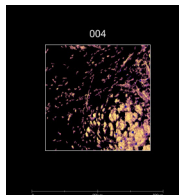
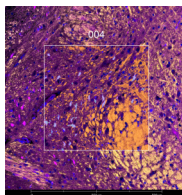
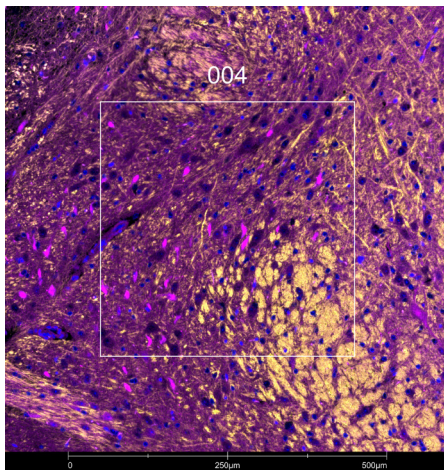
Clone ID	P82H9
Fluorophore	AF594
Antibody Concentration	1 µg/mL
Mono or Polyclonal	Mono
Host & Isotype	Mouse IgG1 Kappa
Lot Tested	B277704

Immunofluorescent Screening Information

Tissue Type	Mm brain
Section Thickness	5 µm
HIER	10 min 100°C
Proteinase K Concentration	1 µg/mL
Fixation/Embedding	FFPE

Vendor Information

Vendor	BioLegend
Catalog Number/Web Link	850905



Mbp (yellow) localizes to neurons in mouse brain (left image). The expression pattern of the Mbp+ neurons can be isolated from NeuN+ post-mitotic neurons (magenta) through GeoMx segmentation (right image).

Legend

Mbp: yellow NeuN: magenta
 SYTO13: blue
 Segmentation for Mbp: orange
 Segmentation for NeuN: cyan

Stained Image Data

Exposure Time	300 ms
Signal-to-Noise	5
ROI Type	Geometric or Segmented

* Recommendations above are meant to act as a starting point for your own experimental optimization

For more information, please visit nanosttring.com/GeoMxDSP

NanoString Technologies, Inc.

530 Fairview Avenue North
 Seattle, Washington 98109

T (888) 358-6266
 F (206) 378-6288

nanosttring.com
info@nanosttring.com

Sales Contacts

United States us.sales@nanosttring.com
 EMEA: europe.sales@nanosttring.com

Asia Pacific & Japan apac.sales@nanosttring.com
 Other Regions info@nanosttring.com