



OLIG2

Oligodendrocytes

Antibody Information

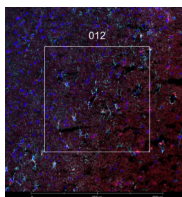
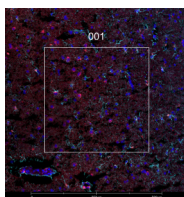
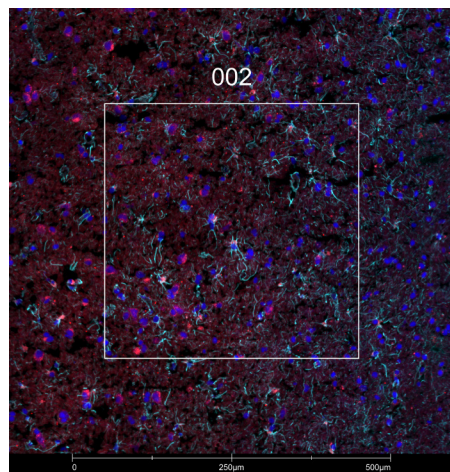
Clone ID	EPR2673
Fluorophore	AF647
Antibody Concentration	5 µg/mL
Mono or Polyclonal	Mono
Host & Isotype	Rabbit IgG
Lot Tested	GR3391239-3

Immunofluorescent Screening Information

Tissue Type	Hs brain
Section Thickness	5 µm
HIER	10 min 100°C
Proteinase K Concentration	1 µg/mL
Fixation/Embedding	fresh frozen / OCT

Vendor Information

Vendor	Abcam
Catalog Number/Web Link	ab225100



The signal-to-noise ratio for this conjugate is not reliably high enough in our assay to allow for GeoMx segmentation. However, the expected staining pattern for OLIG2 (red) in oligodendrocytes can still be observed by an experienced pathologist in human brain (all images) and used to place geometric ROIs.

Legend

OLIG2: red
NEFH: yellow
GFAP: cyan
SYTO83: blue

Stained Image Data

Exposure Time	300 ms
Signal-to-Noise	2
ROI Type	Geometric only

* Recommendations above are meant to act as a starting point for your own experimental optimization

For more information, please visit nanosttring.com/GeoMxDSP

NanoString Technologies, Inc.

530 Fairview Avenue North
Seattle, Washington 98109

T (888) 358-6266
F (206) 378-6288

nanosttring.com
info@nanosttring.com

Sales Contacts

United States us.sales@nanosttring.com
EMEA: europe.sales@nanosttring.com

Asia Pacific & Japan apac.sales@nanosttring.com
Other Regions info@nanosttring.com