



TUBB3

Microtubules in the central and peripheral nervous system

Antibody Information

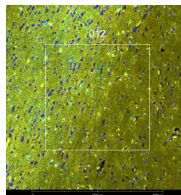
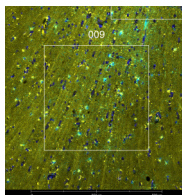
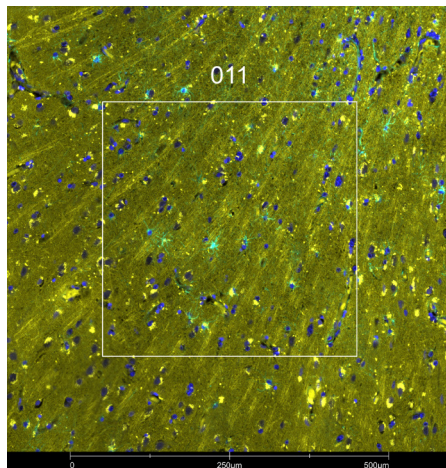
Clone ID	EP1569Y
Fluorophore	AF488
Antibody Concentration	0.5 µg/mL
Mono or Polyclonal	Mono
Host & Isotype	Rabbit IgG
Lot Tested	GR3435497-1

Immunofluorescent Screening Information

Tissue Type	Hs brain
Section Thickness	5 µm
HIER	10 min 100°C
Proteinase K Concentration	1 µg/mL
Fixation/Embedding	FFPE

Vendor Information

Vendor	Abcam
Catalog Number/Web Link	ab283728



The signal-to-noise ratio for this conjugate is not reliably high enough in our assay to allow for GeoMx segmentation. However, the expected staining pattern for TUBB3 (yellow) in microtubules can still be observed by an experienced pathologist in human brain (all images) and used to place geometric ROIs.

Legend

TUBB3: yellow
SYTO83: blue
GFAP: cyan

Stained Image Data

Exposure Time	300 ms
Signal-to-Noise	2
ROI Type	Geometric only

* Recommendations above are meant to act as a starting point for your own experimental optimization

For more information, please visit nanosttring.com/GeoMxDSP

NanoString Technologies, Inc.

530 Fairview Avenue North
Seattle, Washington 98109

T (888) 358-6266
F (206) 378-6288

nanosttring.com
info@nanosttring.com

Sales Contacts

United States us.sales@nanosttring.com
EMEA: europe.sales@nanosttring.com

Asia Pacific & Japan apac.sales@nanosttring.com
Other Regions info@nanosttring.com