

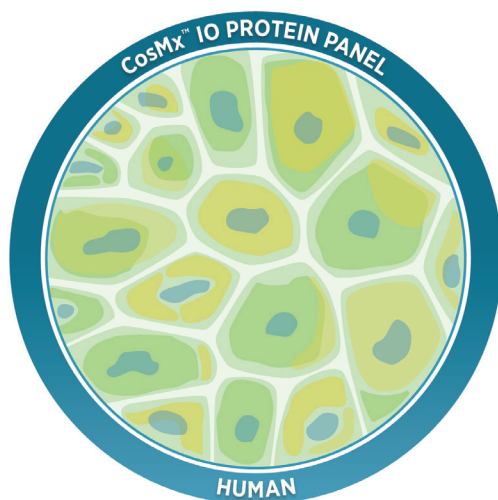


CosMx™ Human Immuno-Oncology Protein Panel

Comprehensive IO Coverage

64-plex Protein Assay

The CosMx™ Human Immuno-Oncology Protein Panel enables high-plex spatial analysis of more than 64 proteins from a single FFPE slide at subcellular resolution. Profile expression of different Immune and Oncology-related proteins and get a comprehensive view of the spatial phenotyping landscape, including tissue heterogeneity, signaling pathways, and tumor progression.



Product Highlights

- Analyze 64 targets plus 4 dedicated cell segmentation markers on a single slide
- Leverage best in class cell segmentation algorithms for accurate single cell proteomic analysis.
- Customize with up to 8 additional protein targets of your choice
- Validated for use across multiple tissue types, including skin, stomach, uterus, prostate, breast, and more

Establish a framework for your discoveries:

- Identify spatially-dependent protein expression patterns
- Characterize the spatial organization of immune infiltrates
- Utilize automated, semi-supervised cell typing to classify a wide variety of cell types

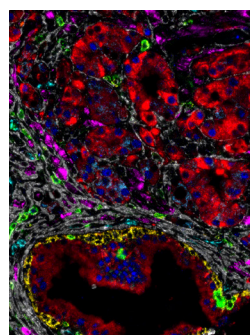
Answer new questions:

- Which biomarkers are relevant to your disease of interest?
- What spatial correlations can you observe between neighboring cells?
- Which cellular compartments are your proteins co-localizing within?

Explore CosMx Protein data yourself! Check out our FFPE Colorectal Cancer Minerva story [here](#).

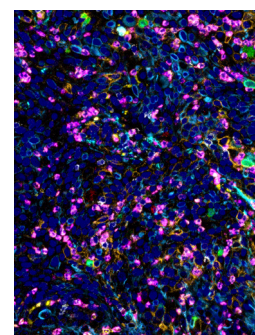
Prostate Cancer

- TCF-1*
- BCL6*
- CD45RO*
- CD31
- FN1
- CD45
- Desmin*
- LAMP1
- EGFR



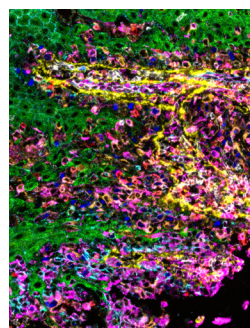
Uterine Cancer

- DNA
- panCK
- ICAM1
- SMA
- GITR
- IDO1
- CD66b*
- p44-42 MAP-ERK*
- MPO*



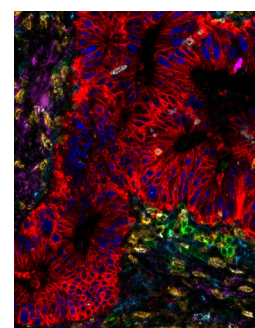
Skin Cancer

- Ki67
- SMA
- MART-1*
- E-cadherin*
- CD34
- PanCK
- VIM
- CD8
- FN1



Colon Cancer

- p53
- VIM
- CD4
- FN1
- CD8
- CD11a*
- CD20
- CD163
- EPCAM

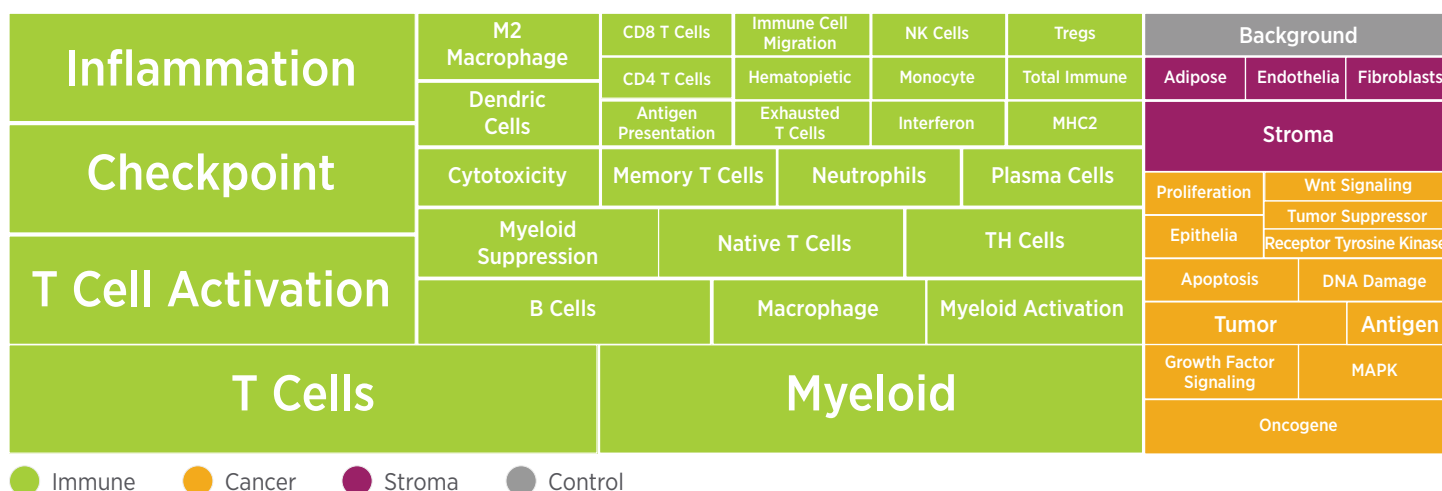


Content Curated for Your Biology

Designed to profile more than 64 targets with spatial and subcellular resolution. The CosMx Immuno-Oncology Panel contains key targets to provide:

- Comprehensive Coverage: Unique view of the spatial protein expression for tumor and immune response to enable cell profiling of immune and non-immune cells, including T cells, B cells, macrophages, NK cells, epithelia and stroma
- Characterize Disease Biology: Includes markers to monitor immune activation, cytotoxicity, and key IO drug targets
- Highly Curated Content: Content developed by industry experts

Panel Content



Immune and Cell Typing			
CCR7	CD16	CD38	FABP4
CD11b	CD163	CD4	Fibronectin
CD11c	CD19	CD45	FOXP3
CD123	CD20	CD45RA	IgD
CD127	CD27	CD56	SMA
CD138	CD3	CD68	TCF-1
CD14	CD31	CD8	Vimentin
CD15	CD34	Eq	

Cancer Cell State
KI-67
BCL-2
p53
Beta-catenin
EGFR
HER2
pan-RAS

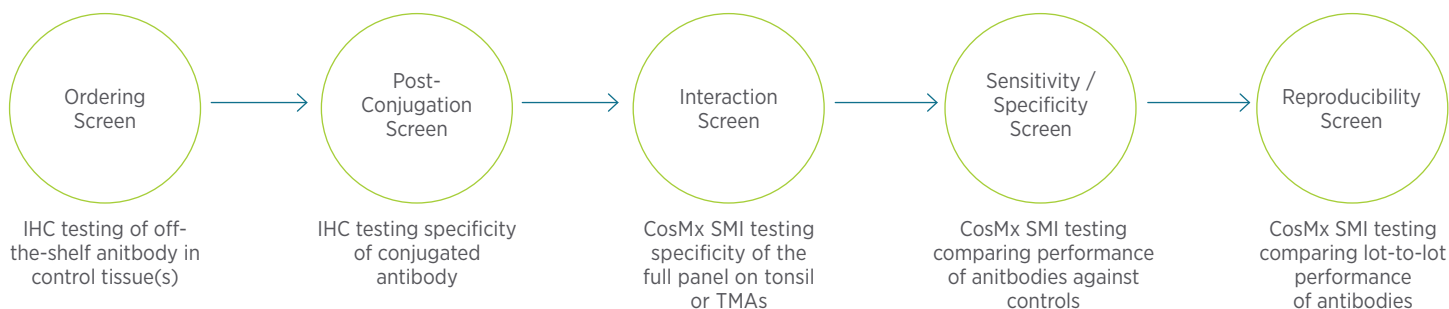
Immune Activation Status and Host Response			
4-1BB	GZMA	IL-18	PD-1
B7-H3	GZMB	IL-1B	PD-L1
CD39	HLA-DR	iNOS	PD-L2
CD40	ICAM1	LAG3	STING
CTLA4	ICOS	LAMP1	TIM-3
GITR	IDO1	NF-kB p65	VISTA

Controls
Ms IgG1
Rb IgG

Accompanying kits are available for cell segmentation

Validated Assays Ready for Use

All CosMx Protein Assays undergo extensive antibody validation to ensure high quality data. This validation process ensures that every antibody has appropriate specificity, sensitivity and overall performance.



Ordering Information

Protein Assays arrive ready-to-use and generally ship within 24 hours following purchase.

Product	Product Description	Quantity	Catalog Number
CosMx Human Immuno-oncology Panel (Protein, 64 Plex)	CosMx Human Immuno-oncology 64-plex Protein Panel	4 slides	CMX-H-IOP-64P-P
CosMx Human Universal Cell Segmentation Kit (Protein)	CosMx Human Universal Cell Segmentation Kit for Protein assays. Includes CosMx DAPI Nuclear Stain and Hs CD298/B2M Marker Mix for Ch1 and Ch2, respectively.	4 slides	CMX-H-UCS-12-P
[Optional] CosMx Human IO PanCK/CD45 Morphology Marker Kit (Protein)	CosMx Human IO PanCK/CD45 Morphology Marker Kit for Protein assays. Includes the CosMx Hs PanCK/CD45 Marker Mix, for Ch3 and Ch4, respectively.	4 slides	CMX-H-IO-PCKCD45-MM34-P
[Optional] CosMx Human CD3 A La Carte Marker (Protein)	CosMx Human CD3 A La Carte Marker for Protein assays, Ch5.	4 slides	CMX-H-CD3-MM5-P
[Optional] CosMx Human CD68 A La Carte Marker (Protein)	CosMx Human CD68 A La Carte Marker for Protein assays, Ch5.	4 slides	CMX-H-CD68-MM5-P
[Optional] CosMx Human CD8 A La Carte Marker (Protein)	CosMx Human CD8 A La Carte Marker for Protein assays, Ch5.	4 slides	CMX-H-CD8-MM5-P
[Optional] CosMx Human Cytokeratin 8/18 A La Carte Marker (Protein)	CosMx Human Cytokeratin 8/18 A La Carte Marker for Protein assays, Ch5.	4 slides	CMX-H-CK818-MM5-P

Selected Publications

1. He S, et al. High-plex imaging of RNA and proteins at subcellular resolution in fixed tissue by spatial molecular imaging. Nat Biotech 2022; 40: 1794-1806.



For more information, please visit nanosttring.com

NanoString Technologies, Inc.

530 Fairview Avenue North
Seattle, Washington 98109

T (888) 358-6266
F (206) 378-6288

nanosttring.com
info@nanosttring.com

Sales Contacts

United States us.sales@nanosttring.com
EMEA: europe.sales@nanosttring.com

Asia Pacific & Japan apac.sales@nanosttring.com
Other Regions info@nanosttring.com

FOR RESEARCH USE ONLY. Not for use in diagnostic procedures.

© 2017-2023 NanoString Technologies, Inc. All rights reserved. NanoString, NanoString Technologies, nCounter, Breast Cancer 360, nSolver, and the NanoString logo are registered trademarks of NanoString Technologies, Inc., in the United States and/or other countries.

Aug 2023 MK5880