



AQP1

Water-specific channel

Antibody Information

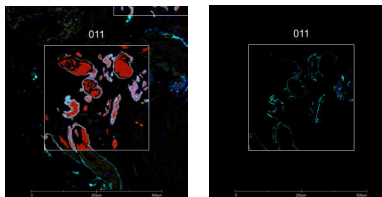
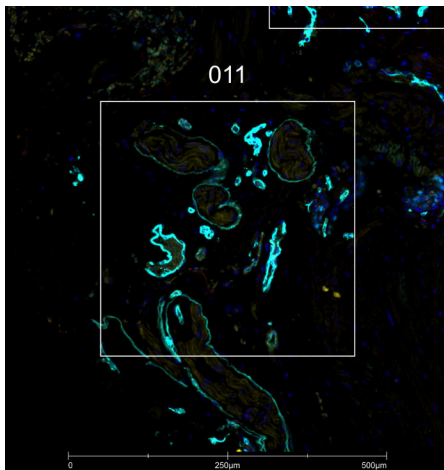
Clone ID	EPR11588(b)
Fluorophore	AF647
Antibody Concentration	0.5 µg/mL
Mono or Polyclonal	Mono
Host & Isotype	Rabbit IgG
Lot Tested	GR3380080-1

Immunofluorescent Screening Information

Tissue Type	FFPE Human kidney, fallopian tube, breast, tonsil, prostate
Section Thickness	5 µm
HIER	10 min 100°C
Proteinase K Concentration	1 µg/mL
Fixation/Embedding	FFPE

Vendor Information

Vendor	Abcam
Catalog Number/Web Link	ab225225



AQP1 (cyan) localizes to water-specific channels in human prostate (left image). The expression pattern of these AQP1+ water channels can be isolated from Laminin+ basement membrane (yellow) through GeoMx segmentation (right image).

Legend

AQP1: cyan
Laminin: yellow
SYTO13: blue
Segmentation for AQP1: pink
Segmentation for Laminin: red

Stained Image Data

Exposure Time	300 ms
Signal-to-Noise	22
ROI Type	Geometric or Segmented

* Recommendations above are meant to act as a starting point for your own experimental optimization

For more information, please visit nanosttring.com/GeoMxDSP

NanoString Technologies, Inc.

530 Fairview Avenue North
Seattle, Washington 98109

T (888) 358-6266
F (206) 378-6288

nanosttring.com
info@nanosttring.com

Sales Contacts

United States us.sales@nanosttring.com
EMEA: europe.sales@nanosttring.com

Asia Pacific & Japan apac.sales@nanosttring.com
Other Regions info@nanosttring.com