



Acta2

Fibroblasts, smooth muscle, cell motility

Antibody Information

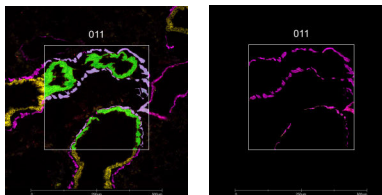
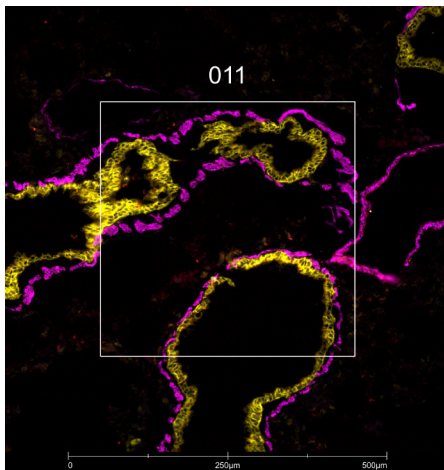
Clone ID	1A4
Fluorophore	AF488
Antibody Concentration	2 µg/mL
Mono or Polyclonal	Mono
Host & Isotype	Mouse IgG2a
Lot Tested	2279167

Immunofluorescent Screening Information

Tissue Type	FrF Mouse lung, kidney
Section Thickness	5 µm
HIER	10 min 100°C
Proteinase K Concentration	1 µg/mL
Fixation/Embedding	fresh frozen / OCT

Vendor Information

Vendor	ThermoFisher
Catalog Number/Web Link	IC1420G



Acta2 (magenta) localizes to fibroblasts in mouse lung (left image). The expression pattern of these Acta2+ fibroblasts can be isolated from Epcam+ epithelial cells (yellow) through GeoMx segmentation (right image).

Legend

Acta2: magenta
Epcam: yellow
SYTO83: blue
Segmentation for Acta2: light blue
Segmentation for Epcam: green

Stained Image Data

Exposure Time	200 ms
Signal-to-Noise	96.4
ROI Type	Geometric or Segmented

* Recommendations above are meant to act as a starting point for your own experimental optimization

For more information, please visit nanosttring.com/GeoMxDSP

NanoString Technologies, Inc.

530 Fairview Avenue North
Seattle, Washington 98109

T (888) 358-6266
F (206) 378-6288

nanosttring.com
info@nanosttring.com

Sales Contacts

United States us.sales@nanosttring.com
EMEA: europe.sales@nanosttring.com

Asia Pacific & Japan apac.sales@nanosttring.com
Other Regions info@nanosttring.com