



CD163

M2 macrophages and monocytes

Antibody Information

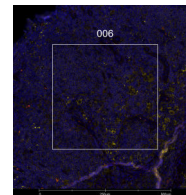
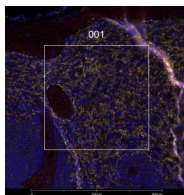
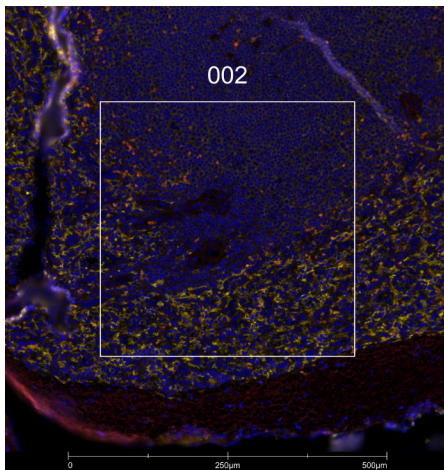
Clone ID	EPR14643-36
Fluorophore	AF647
Antibody Concentration	5 µg/mL
Mono or Polyclonal	Mono
Host & Isotype	Rabbit IgG
Lot Tested	GR3345595-3

Immunofluorescent Screening Information

Tissue Type	FFPE Human spleen, lymph node, tonsil
Section Thickness	5 µm
HIER	10 min 100°C
Proteinase K Concentration	1 µg/mL
Fixation/Embedding	FFPE

Vendor Information

Vendor	Abcam
Catalog Number/Web Link	ab218294



Legend

CD163: yellow
 SYTO13: blue
 Autofluorescence: red

The signal-to-noise ratio for this conjugate is not reliably high enough in our assay to allow for GeoMx segmentation. However, the expected staining pattern for CD163 (yellow) in M2 macrophages and monocytes can still be observed by an experienced pathologist in human spleen (left and center images) as well as human lymph node (right image) and used to place geometric ROIs.

Stained Image Data

Exposure Time	300 ms
Signal-to-Noise	2.9
ROI Type	Geometric only

* Recommendations above are meant to act as a starting point for your own experimental optimization

For more information, please visit nanosttring.com/GeoMxDSP

NanoString Technologies, Inc.

530 Fairview Avenue North
 Seattle, Washington 98109

T (888) 358-6266
 F (206) 378-6288

nanosttring.com
info@nanosttring.com

Sales Contacts

United States us.sales@nanosttring.com
 EMEA: europe.sales@nanosttring.com

Asia Pacific & Japan apac.sales@nanosttring.com
 Other Regions info@nanosttring.com