



# CD20

## B cells

### Antibody Information

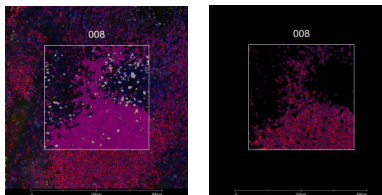
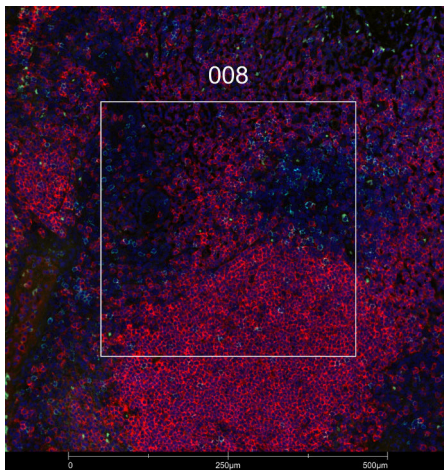
Clone ID	EP459Y
Fluorophore	AF647
Antibody Concentration	2 µg/mL
Mono or Polyclonal	Mono
Host & Isotype	Rabbit IgG
Lot Tested	GR3387755-1

### Immunofluorescent Screening Information

Tissue Type	FFPE Human tonsil
Section Thickness	5 µm
HIER	10 min 100°C
Proteinase K Concentration	1 µg/mL
Fixation/Embedding	FFPE

### Vendor Information

Vendor	Abcam
Catalog Number/Web Link	<a href="#">ab198943</a>



CD20 (red) localizes to B cells in human tonsil (left image). The expression pattern of these CD20+ B cells can be isolated from CD8+ cytotoxic T lymphocytes (cyan) through GeoMx segmentation (right image).

### Legend

CD20: red  
 CD8: cyan  
 SYTO13: blue  
 Segmentation for CD20: purple  
 Segmentation for CD8: pink

### Stained Image Data

Exposure Time	300 ms
Signal-to-Noise	11.4
ROI Type	Geometric or Segmented

\* Recommendations above are meant to act as a starting point for your own experimental optimization

For more information, please visit [nanosttring.com/GeoMxDSP](https://nanosttring.com/GeoMxDSP)

#### NanoString Technologies, Inc.

530 Fairview Avenue North  
 Seattle, Washington 98109

T (888) 358-6266  
 F (206) 378-6288

[nanosttring.com](https://nanosttring.com)  
[info@nanosttring.com](mailto:info@nanosttring.com)

#### Sales Contacts

United States [us.sales@nanosttring.com](mailto:us.sales@nanosttring.com)  
 EMEA: [europe.sales@nanosttring.com](mailto:europe.sales@nanosttring.com)

Asia Pacific & Japan [apac.sales@nanosttring.com](mailto:apac.sales@nanosttring.com)  
 Other Regions [info@nanosttring.com](mailto:info@nanosttring.com)