



CD31

Endothelial cells

Antibody Information

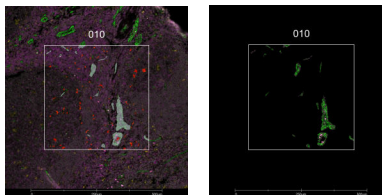
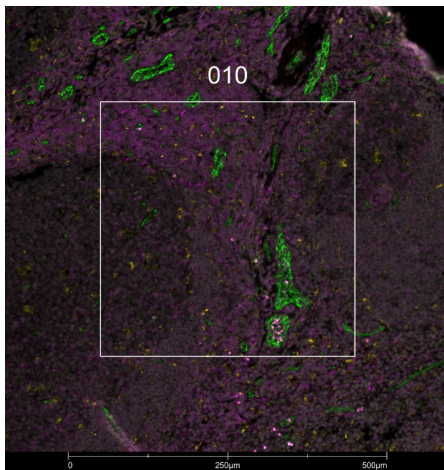
Clone ID	JC/70A
Fluorophore	AF647
Antibody Concentration	4 µg/mL
Mono or Polyclonal	Mono
Host & Isotype	Mouse IgG1
Lot Tested	GR3387162-1

Immunofluorescent Screening Information

Tissue Type	FFPE Human spleen, lymph node, tonsil
Section Thickness	5 µm
HIER	10 min 100°C
Proteinase K Concentration	1 µg/mL
Fixation/Embedding	FFPE

Vendor Information

Vendor	Abcam
Catalog Number/Web Link	ab215912



CD31 (green) localizes to endothelial cells in human tonsil (left image). The expression pattern of these CD31+ endothelial cells can be isolated from CD3+ T cells (magenta) and CD68+ macrophages (yellow) through GeoMx segmentation (right image).

Legend

CD31: green CD3: magenta
 CD68: yellow SYTO13: grey
 Segmentation for CD31: grey
 Segmentation for CD68: red

Stained Image Data

Exposure Time	300 ms
Signal-to-Noise	8.2
ROI Type	Geometric or Segmented

* Recommendations above are meant to act as a starting point for your own experimental optimization

For more information, please visit nanosttring.com/GeoMxDSP

NanoString Technologies, Inc.

530 Fairview Avenue North
 Seattle, Washington 98109

T (888) 358-6266
 F (206) 378-6288

nanosttring.com
info@nanosttring.com

Sales Contacts

United States us.sales@nanosttring.com
 EMEA: europe.sales@nanosttring.com

Asia Pacific & Japan apac.sales@nanosttring.com
 Other Regions info@nanosttring.com