



# CD3

## T lymphocytes

### Antibody Information

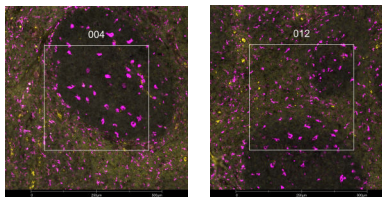
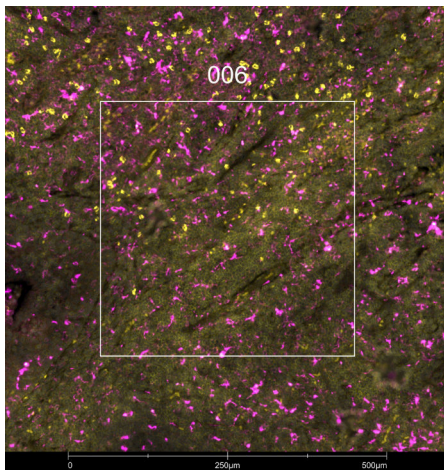
Clone ID	C3e/1308
Fluorophore	AF594
Antibody Concentration	1 µg/mL
Mono or Polyclonal	Mono
Host & Isotype	Mouse IgG2b Kappa
Lot Tested	916-8PABX210525-0805821AF594

### Immunofluorescent Screening Information

Tissue Type	FFPE Human tonsil
Section Thickness	5 µm
HIER	10 min 100°C
Proteinase K Concentration	1 µg/mL
Fixation/Embedding	FFPE

### Vendor Information

Vendor	Novus
Catalog Number/Web Link	<a href="#">NBP2-54392AF594</a>



The signal-to-noise ratio for this conjugate is not reliably high enough in our assay to allow for GeoMx segmentation. However, the expected staining pattern in CD3+ T lymphocytes (yellow) can still be deciphered by an experienced pathologist in human tonsil (example images shown) and used to place geometric ROIs.

### Legend

CD3: yellow  
 CD68: magenta  
 SYTO13: grey

### Stained Image Data

Exposure Time	300 ms
Signal-to-Noise	2.4
ROI Type	Geometric only

\* Recommendations above are meant to act as a starting point for your own experimental optimization

For more information, please visit [nanosttring.com/GeoMxDSP](https://nanosttring.com/GeoMxDSP)

#### NanoString Technologies, Inc.

530 Fairview Avenue North  
 Seattle, Washington 98109

T (888) 358-6266  
 F (206) 378-6288

[nanosttring.com](https://nanosttring.com)  
[info@nanosttring.com](mailto:info@nanosttring.com)

#### Sales Contacts

United States [us.sales@nanosttring.com](mailto:us.sales@nanosttring.com)  
 EMEA: [europe.sales@nanosttring.com](mailto:europe.sales@nanosttring.com)

Asia Pacific & Japan [apac.sales@nanosttring.com](mailto:apac.sales@nanosttring.com)  
 Other Regions [info@nanosttring.com](mailto:info@nanosttring.com)