



CD3

T lymphocytes

Antibody Information

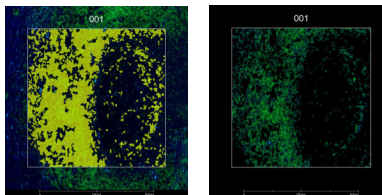
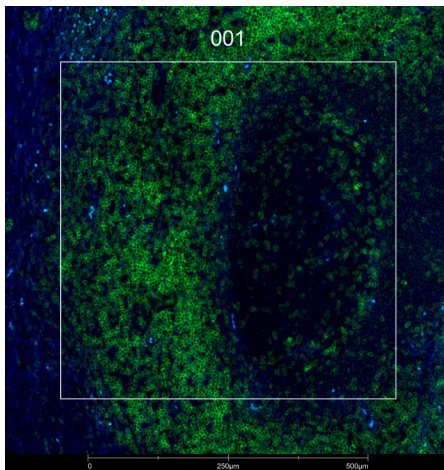
Clone ID	C3e/1308
Fluorophore	AF647
Antibody Concentration	1 µg/mL
Mono or Polyclonal	Mono
Host & Isotype	Mouse IgG2b Kappa
Lot Tested	916-8PABX210525-0805821AF647

Immunofluorescent Screening Information

Tissue Type	FFPE Human tonsil
Section Thickness	5 µm
HIER	10 min 100°C
Proteinase K Concentration	1 µg/mL
Fixation/Embedding	FFPE

Vendor Information

Vendor	Novus
Catalog Number/Web Link	NBP2-54392AF647



CD3 (green) localizes to T lymphocytes mostly adjacent to germinal centers of a human tonsil (left image). The expression pattern of these CD3+ T cells can be isolated through GeoMx segmentation (right image).

Legend

CD3: green
 SYTO13: blue
 Segmentation for CD3: yellow

Stained Image Data

Exposure Time	300 ms
Signal-to-Noise	3.5
ROI Type	Geometric or Segmented

* Recommendations above are meant to act as a starting point for your own experimental optimization

For more information, please visit nanosttring.com/GeoMxDSP

NanoString Technologies, Inc.

530 Fairview Avenue North
 Seattle, Washington 98109

T (888) 358-6266
 F (206) 378-6288

nanosttring.com
info@nanosttring.com

Sales Contacts

United States us.sales@nanosttring.com
 EMEA: europe.sales@nanosttring.com

Asia Pacific & Japan apac.sales@nanosttring.com
 Other Regions info@nanosttring.com