



CD68

Macrophages

Antibody Information

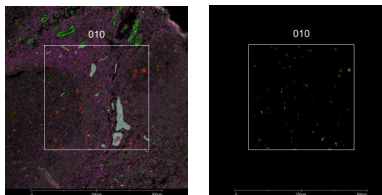
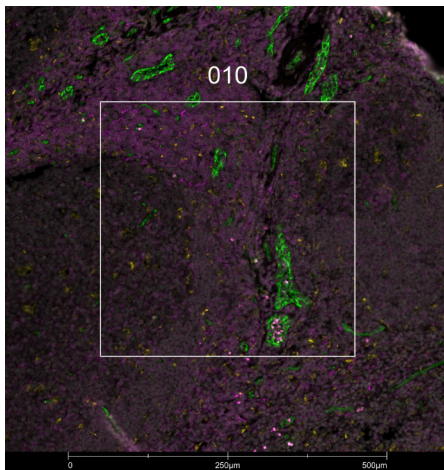
Clone ID	C68/684
Fluorophore	AF532
Antibody Concentration	5 µg/mL
Mono or Polyclonal	Mono
Host & Isotype	Mouse IgG1 Kappa
Lot Tested	2PABX210831-AF532

Immunofluorescent Screening Information

Tissue Type	FFPE Human tonsil
Section Thickness	5 µm
HIER	10 min 100°C
Proteinase K Concentration	1 µg/mL
Fixation/Embedding	FFPE

Vendor Information

Vendor	Novus
Catalog Number/Web Link	NBP2-34587AF532



CD68 (yellow) localizes to macrophages in human tonsil (left image). The expression pattern of these CD68+ macrophages can be isolated from CD3+ T cells (magenta) and CD31+ endothelial cells (green) through GeoMx segmentation (right image).

Legend

CD68: yellow CD31: green
 CD3: magenta SYTO13: grey
 Segmentation for CD68: red
 Segmentation for CD31: grey

Stained Image Data

Exposure Time	300 ms
Signal-to-Noise	5.9
ROI Type	Geometric or Segmented

* Recommendations above are meant to act as a starting point for your own experimental optimization

For more information, please visit nanosttring.com/GeoMxDSP

NanoString Technologies, Inc.

530 Fairview Avenue North
 Seattle, Washington 98109

T (888) 358-6266
 F (206) 378-6288

nanosttring.com
info@nanosttring.com

Sales Contacts

United States us.sales@nanosttring.com
 EMEA: europe.sales@nanosttring.com

Asia Pacific & Japan apac.sales@nanosttring.com
 Other Regions info@nanosttring.com