



COL1A1 / Collagen I

Extracellular matrix

Antibody Information

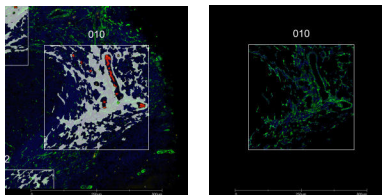
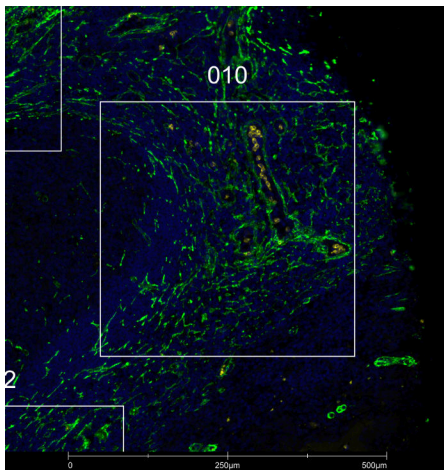
Clone ID	EPR7785
Fluorophore	AF647
Antibody Concentration	1 µg/mL
Mono or Polyclonal	Mono
Host & Isotype	Rabbit IgG
Lot Tested	GR3390188-6

Immunofluorescent Screening Information

Tissue Type	FFPE Human tonsil, spleen, lymph node
Section Thickness	5 µm
HIER	10 min 100°C
Proteinase K Concentration	1 µg/mL
Fixation/Embedding	FFPE

Vendor Information

Vendor	Abcam
Catalog Number/Web Link	ab280968



COL1A1 (green) localizes to extracellular matrix in human tonsil (left image). The expression pattern of the COL1A1+ extracellular matrix can be isolated from ELA2+ neutrophils (yellow) through GeoMx segmentation (right image).

Legend

COL1A1: green
 ELA2: yellow
 SYTO83: blue
 Segmentation for COL1A1: white
 Segmentation for ELA2: red

Stained Image Data

Exposure Time	300 ms
Signal-to-Noise	5.6
ROI Type	Geometric or Segmented

* Recommendations above are meant to act as a starting point for your own experimental optimization

For more information, please visit nanosttring.com/GeoMxDSP

NanoString Technologies, Inc.

530 Fairview Avenue North
 Seattle, Washington 98109

T (888) 358-6266
 F (206) 378-6288

nanosttring.com
info@nanosttring.com

Sales Contacts

United States us.sales@nanosttring.com
 EMEA: europe.sales@nanosttring.com

Asia Pacific & Japan apac.sales@nanosttring.com
 Other Regions info@nanosttring.com