



# ELA2 / Neutrophil Elastase

## Neutrophils

### Antibody Information

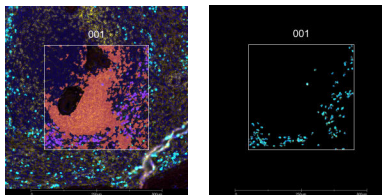
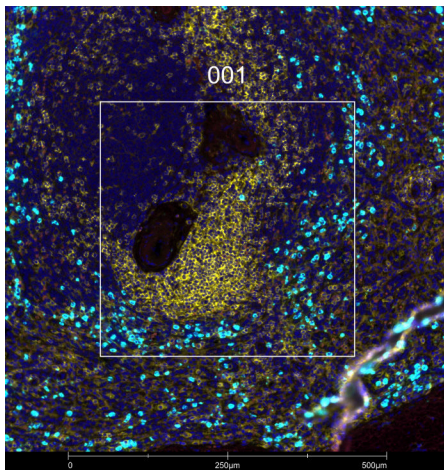
Clone ID	950334
Fluorophore	AF594
Antibody Concentration	2 µg/mL
Mono or Polyclonal	Mono
Host & Isotype	Mouse IgG1
Lot Tested	ckl002-4-092821-AF594

### Immunofluorescent Screening Information

Tissue Type	FFPE Human spleen, lymph node, thymus
Section Thickness	5 µm
HIER	10 min 100°C
Proteinase K Concentration	1 µg/mL
Fixation/Embedding	FFPE

### Vendor Information

Vendor	Novus
Catalog Number/Web Link	<a href="#">MAB9167AF594</a>



ELA2 (cyan) localizes to neutrophils in human spleen (left image). The expression pattern of these ELA2+ neutrophils can be isolated from CD4+ T cells (yellow) through GeoMx segmentation (right image).

### Legend

ELA2: cyan  
 CD4: yellow  
 SYTO13: blue  
 Segmentation for ELA2: purple  
 Segmentation for CD4: red

### Stained Image Data

Exposure Time	300 ms
Signal-to-Noise	48.7
ROI Type	Geometric or Segmented

\* Recommendations above are meant to act as a starting point for your own experimental optimization

For more information, please visit [nanosttring.com/GeoMxDSP](https://nanosttring.com/GeoMxDSP)

#### NanoString Technologies, Inc.

530 Fairview Avenue North  
 Seattle, Washington 98109

T (888) 358-6266  
 F (206) 378-6288

[nanosttring.com](https://nanosttring.com)  
[info@nanosttring.com](mailto:info@nanosttring.com)

#### Sales Contacts

United States [us.sales@nanosttring.com](mailto:us.sales@nanosttring.com)  
 EMEA: [europe.sales@nanosttring.com](mailto:europe.sales@nanosttring.com)

Asia Pacific & Japan [apac.sales@nanosttring.com](mailto:apac.sales@nanosttring.com)  
 Other Regions [info@nanosttring.com](mailto:info@nanosttring.com)