



GFAP

Glial Fibrillary Acidic Protein in Mature Astrocytes

Antibody Information

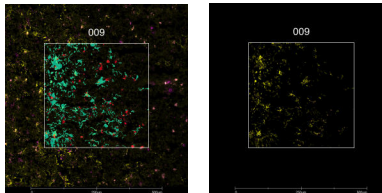
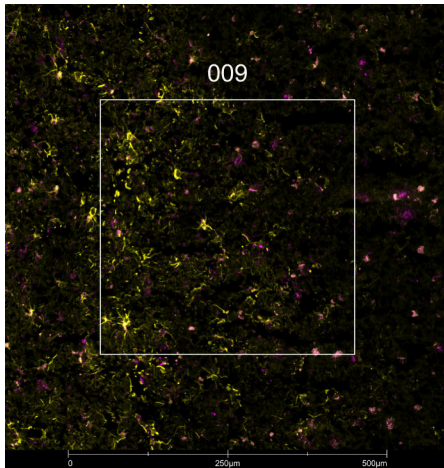
| | |
|------------------------|---------------------|
| Clone ID | 5C10 |
| Fluorophore | AF488 |
| Antibody Concentration | 4 µg/mL |
| Mono or Polyclonal | Mono |
| Host & Isotype | Mouse IgG1 |
| Lot Tested | 012219-081821-AF488 |

Immunofluorescent Screening Information

| | |
|----------------------------|--------------------|
| Tissue Type | FrF Human brain |
| Section Thickness | 5 µm |
| HIER | 10 min 100°C |
| Proteinase K Concentration | 1 µg/mL |
| Fixation/Embedding | fresh frozen / OCT |

Vendor Information

| | |
|-------------------------|---------------------------------|
| Vendor | Novus |
| Catalog Number/Web Link | NBP1-05197AF488 |



GFAP (yellow) localizes to astrocytes in human brain (left image). The expression pattern of these GFAP+ astrocytes can be isolated from IBA1+ microglia (magenta) through GeoMx segmentation (right image).

Legend

GFAP: yellow
 IBA1: magenta
 SYTO83: grey
 Segmentation for GFAP: blue
 Segmentation for IBA1: red

Stained Image Data

| | |
|-----------------|------------------------|
| Exposure Time | 300 ms |
| Signal-to-Noise | 6.8 |
| ROI Type | Geometric or Segmented |

* Recommendations above are meant to act as a starting point for your own experimental optimization

For more information, please visit nanosttring.com/GeoMxDSP

NanoString Technologies, Inc.

530 Fairview Avenue North
 Seattle, Washington 98109

T (888) 358-6266
 F (206) 378-6288

nanosttring.com
info@nanosttring.com

Sales Contacts

United States us.sales@nanosttring.com
 EMEA: europe.sales@nanosttring.com

Asia Pacific & Japan apac.sales@nanosttring.com
 Other Regions info@nanosttring.com