



GFAP

Glial Fibrillary Acidic Protein in Mature Astrocytes

Antibody Information

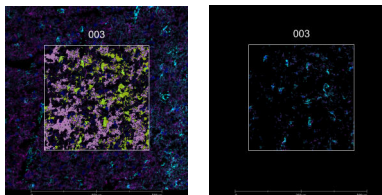
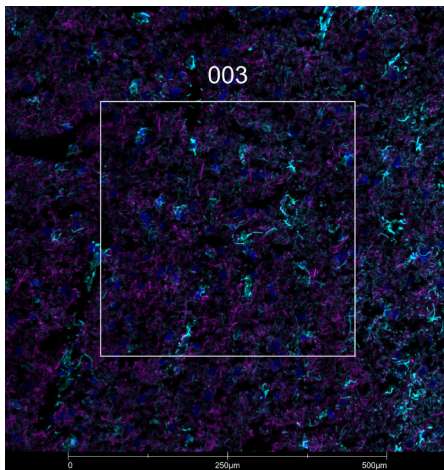
Clone ID	GA-5
Fluorophore	AF647
Antibody Concentration	4 µg/mL
Mono or Polyclonal	Mono
Host & Isotype	Mouse IgG1 Kappa
Lot Tested	2670-1PABX210525-070821-AF647

Immunofluorescent Screening Information

Tissue Type	FrF Human brain
Section Thickness	5 µm
HIER	10 min 100°C
Proteinase K Concentration	1 µg/mL
Fixation/Embedding	fresh frozen / OCT

Vendor Information

Vendor	Novus
Catalog Number/Web Link	NBP2-33184AF647



GFAP (cyan) localizes to astrocytes in human brain (left image). The expression pattern of these GFAP+ astrocytes can be isolated from NEFH+ intermediate filaments/neurons (magenta) through GeoMx segmentation (right image).

Legend

GFAP: cyan
NEFH: magenta
SYTO13: blue
Segmentation for GFAP: yellow
Segmentation for NEFH: pink

Stained Image Data

Exposure Time	300 ms
Signal-to-Noise	8.3
ROI Type	Geometric or Segmented

* Recommendations above are meant to act as a starting point for your own experimental optimization

For more information, please visit nanosttring.com/GeoMxDSP

NanoString Technologies, Inc.

530 Fairview Avenue North
Seattle, Washington 98109

T (888) 358-6266
F (206) 378-6288

nanosttring.com
info@nanosttring.com

Sales Contacts

United States us.sales@nanosttring.com
EMEA: europe.sales@nanosttring.com

Asia Pacific & Japan apac.sales@nanosttring.com
Other Regions info@nanosttring.com