



# Gfap

## Glial Fibrillary Acidic Protein in Mature Astrocytes

### Antibody Information

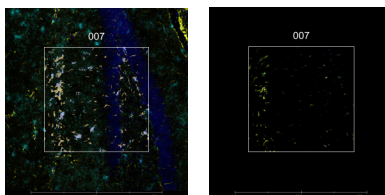
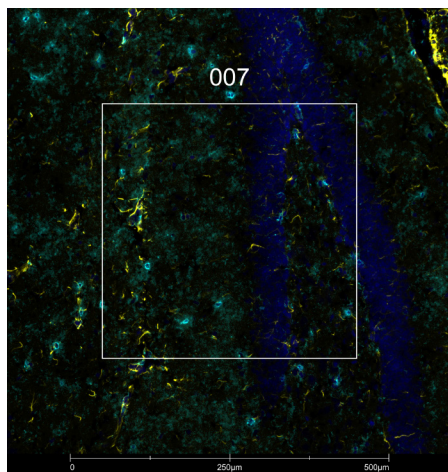
Clone ID	5C10
Fluorophore	AF532
Antibody Concentration	4 µg/mL
Mono or Polyclonal	Mono
Host & Isotype	Mouse IgG1
Lot Tested	012219-081921-AF532

### Immunofluorescent Screening Information

Tissue Type	FrF Mouse brain
Section Thickness	5 µm
HIER	10 min 100°C
Proteinase K Concentration	1 µg/mL
Fixation/Embedding	fresh frozen / OCT

### Vendor Information

Vendor	Novus
Catalog Number/Web Link	<a href="#">NBP1-05197AF532</a>



Gfap (yellow) localizes to astrocytes in mouse brain (left image). The expression pattern of these Gfap+ astrocytes can be isolated from Iba1+ microglia (cyan) through GeoMx segmentation (right image).

### Legend

Gfap: yellow  
Iba1: cyan  
SYTO13: blue  
Segmentation for Gfap: orange  
Segmentation for Iba1: pink

### Stained Image Data

Exposure Time	300 ms
Signal-to-Noise	12.8
ROI Type	Geometric or Segmented

\* Recommendations above are meant to act as a starting point for your own experimental optimization

For more information, please visit [nanosttring.com/GeoMxDSP](https://nanosttring.com/GeoMxDSP)

#### NanoString Technologies, Inc.

530 Fairview Avenue North  
Seattle, Washington 98109

T (888) 358-6266  
F (206) 378-6288

[nanosttring.com](https://nanosttring.com)  
[info@nanosttring.com](mailto:info@nanosttring.com)

#### Sales Contacts

United States [us.sales@nanosttring.com](mailto:us.sales@nanosttring.com)  
EMEA: [europe.sales@nanosttring.com](mailto:europe.sales@nanosttring.com)

Asia Pacific & Japan [apac.sales@nanosttring.com](mailto:apac.sales@nanosttring.com)  
Other Regions [info@nanosttring.com](mailto:info@nanosttring.com)