



Gfap

Glial Fibrillary Acidic Protein in Mature Astrocytes

Antibody Information

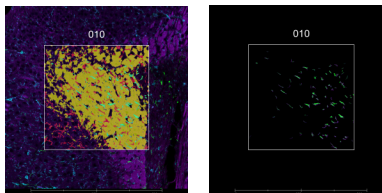
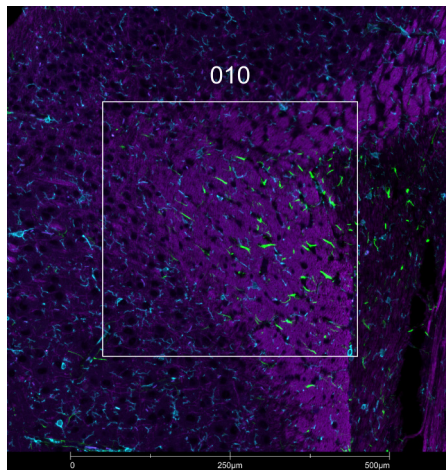
Clone ID	5C10
Fluorophore	AF594
Antibody Concentration	4 µg/mL
Mono or Polyclonal	Mono
Host & Isotype	Mouse IgG1
Lot Tested	012219-081821-AF594

Immunofluorescent Screening Information

Tissue Type	FFPE Mouse brain
Section Thickness	5 µm
HIER	10 min 100°C
Proteinase K Concentration	1 µg/mL
Fixation/Embedding	FFPE

Vendor Information

Vendor	Novus
Catalog Number/Web Link	NBP1-05197AF594



Gfap (green) localizes to astrocytes in mouse brain (left image). The expression pattern of these Gfap+ astrocytes can be isolated from Iba1+ microglia (cyan) and Mbp+ neurons (magenta) through GeoMx segmentation (right image).

Legend

Gfap: green Iba1: cyan
Mbp: magenta SYTO83: blue
Segmentation for Gfap: green
Segmentation for Iba1: red
Segmentation for Mbp: yellow

Stained Image Data

Exposure Time	300 ms
Signal-to-Noise	16.8
ROI Type	Geometric or Segmented

* Recommendations above are meant to act as a starting point for your own experimental optimization

For more information, please visit nanosttring.com/GeoMxDSP

NanoString Technologies, Inc.

530 Fairview Avenue North
Seattle, Washington 98109

T (888) 358-6266
F (206) 378-6288

nanosttring.com
info@nanosttring.com

Sales Contacts

United States us.sales@nanosttring.com
EMEA: europe.sales@nanosttring.com

Asia Pacific & Japan apac.sales@nanosttring.com
Other Regions info@nanosttring.com