



IBA1

Glial cells

Antibody Information

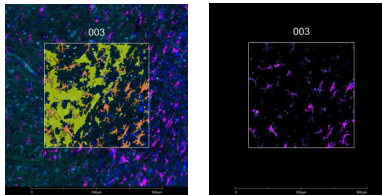
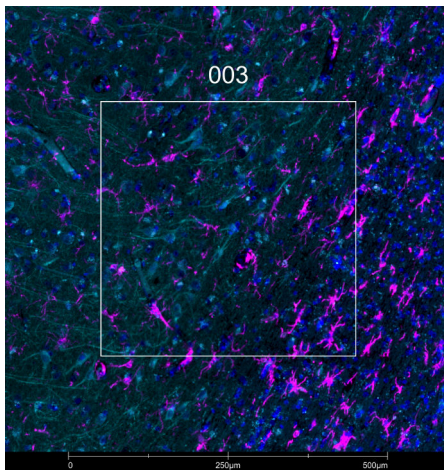
Clone ID	E4O4W
Fluorophore	AF647
Antibody Concentration	4 µg/mL
Mono or Polyclonal	Mono
Host & Isotype	Rabbit IgG
Lot Tested	1

Immunofluorescent Screening Information

Tissue Type	FFPE Human Alzheimer's diseased brain
Section Thickness	5 µm
HIER	10 min 100°C
Proteinase K Concentration	1 µg/mL
Fixation/Embedding	FFPE

Vendor Information

Vendor	Cell Signaling Technology
Catalog Number/Web Link	78060



IBA1 (magenta) localizes to microglia in human brain (left image). The expression pattern of these IBA1+ microglia can be isolated from MAP2+ neuronal microtubules (cyan) through GeoMx segmentation (right image).

Legend

IBA1: magenta
 MAP2: cyan
 SYTO83: blue
 Segmentation for IBA1: orange
 Segmentation for MAP2: yellow

Stained Image Data

Exposure Time	300 ms
Signal-to-Noise	19.3
ROI Type	Geometric or Segmented

* Recommendations above are meant to act as a starting point for your own experimental optimization

For more information, please visit nanosttring.com/GeoMxDSP

NanoString Technologies, Inc.

530 Fairview Avenue North
 Seattle, Washington 98109

T (888) 358-6266
 F (206) 378-6288

nanosttring.com
info@nanosttring.com

Sales Contacts

United States us.sales@nanosttring.com
 EMEA: europe.sales@nanosttring.com

Asia Pacific & Japan apac.sales@nanosttring.com
 Other Regions info@nanosttring.com