



Iba1

Glial cells

Antibody Information

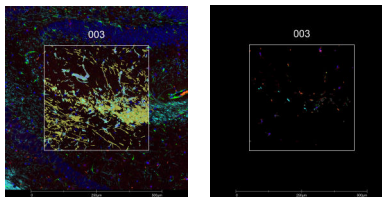
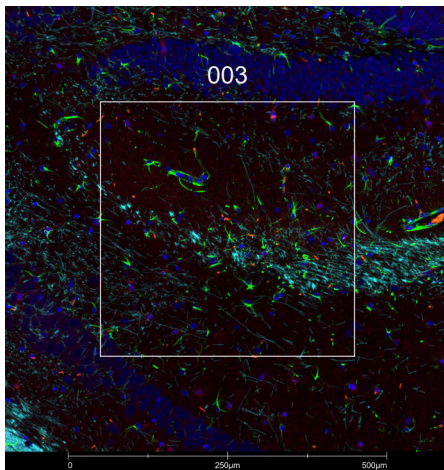
Clone ID	E4O4W
Fluorophore	AF488
Antibody Concentration	4 µg/mL
Mono or Polyclonal	Mono
Host & Isotype	Rabbit IgG
Lot Tested	1

Immunofluorescent Screening Information

Tissue Type	FFPE Mouse brain, liver, small intestine
Section Thickness	5 µm
HIER	10 min 100°C
Proteinase K Concentration	1 µg/mL
Fixation/Embedding	FFPE

Vendor Information

Vendor	Cell Signaling Technology
Catalog Number/Web Link	20825



Iba1 (red) localizes to microglia in the hippocampal region of a mouse brain (left image). The expression pattern of these Iba1+ microglia can be isolated from Gfap+ astrocytes (green) and Mbp+ neurons (cyan) through GeoMx segmentation (right image).

Legend

Iba1: red Gfap: green
Mbp: cyan SYTO83: blue
Segmentation for Iba1: green
Segmentation for Gfap: blue
Segmentation for Mbp: yellow

Stained Image Data

Exposure Time	300 ms
Signal-to-Noise	7.6
ROI Type	Geometric or Segmented

* Recommendations above are meant to act as a starting point for your own experimental optimization

For more information, please visit nanosttring.com/GeoMxDSP

NanoString Technologies, Inc.

530 Fairview Avenue North
Seattle, Washington 98109

T (888) 358-6266
F (206) 378-6288

nanosttring.com
info@nanosttring.com

Sales Contacts

United States us.sales@nanosttring.com
EMEA: europe.sales@nanosttring.com

Asia Pacific & Japan apac.sales@nanosttring.com
Other Regions info@nanosttring.com