



Iba1

Glial cells

Antibody Information

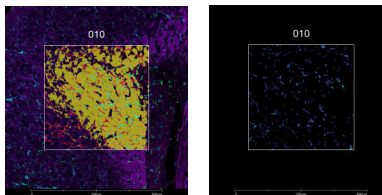
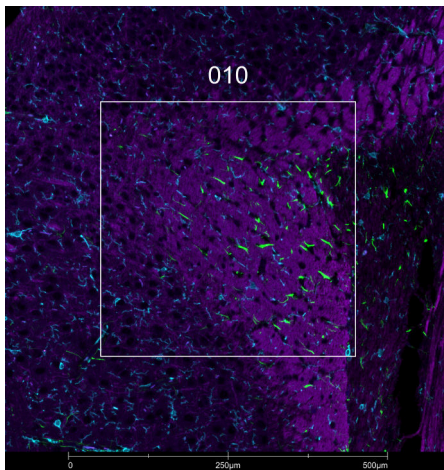
Clone ID	E4O4W
Fluorophore	AF647
Antibody Concentration	4 µg/mL
Mono or Polyclonal	Mono
Host & Isotype	Rabbit IgG
Lot Tested	1

Immunofluorescent Screening Information

Tissue Type	FFPE Mouse brain, liver, small intestine
Section Thickness	5 µm
HIER	10 min 100°C
Proteinase K Concentration	1 µg/mL
Fixation/Embedding	FFPE

Vendor Information

Vendor	Cell Signaling Technology
Catalog Number/Web Link	78060



Iba1 (cyan) localizes to microglia in mouse brain (left image). The expression pattern of these Iba1+ microglia can be isolated from Gfap+ astrocytes (green) and Mbp+ neurons (magenta) through GeoMx segmentation (right image).

Legend

Iba1: cyan Gfap: green
 Mbp: magenta SYTO83: blue
 Segmentation for Iba1: red
 Segmentation for Gfap: green
 Segmentation for Mbp: yellow

Stained Image Data

Exposure Time	300 ms
Signal-to-Noise	8.7
ROI Type	Geometric or Segmented

* Recommendations above are meant to act as a starting point for your own experimental optimization

For more information, please visit nanosttring.com/GeoMxDSP

NanoString Technologies, Inc.

530 Fairview Avenue North
 Seattle, Washington 98109

T (888) 358-6266
 F (206) 378-6288

nanosttring.com
info@nanosttring.com

Sales Contacts

United States us.sales@nanosttring.com
 EMEA: europe.sales@nanosttring.com

Asia Pacific & Japan apac.sales@nanosttring.com
 Other Regions info@nanosttring.com