



# Iba1

## Glial cells

### Antibody Information

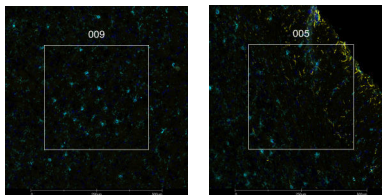
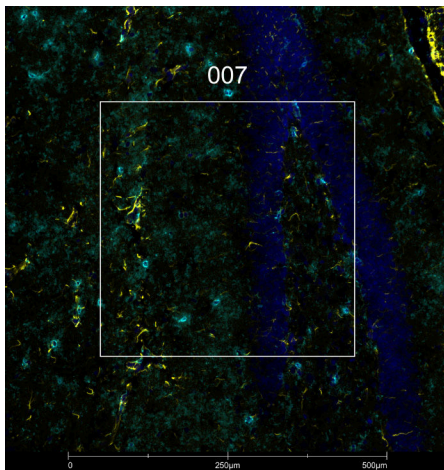
Clone ID	E4O4W
Fluorophore	AF647
Antibody Concentration	4 µg/mL
Mono or Polyclonal	Mono
Host & Isotype	Rabbit IgG
Lot Tested	1

### Immunofluorescent Screening Information

Tissue Type	FrF Mouse brain
Section Thickness	5 µm
HIER	10 min 100°C
Proteinase K Concentration	1 µg/mL
Fixation/Embedding	fresh frozen / OCT

### Vendor Information

Vendor	Cell Signaling Technology
Catalog Number/Web Link	<a href="#">78060</a>



The signal-to-noise ratio for this conjugate is not reliably high enough in our assay to allow for GeoMx segmentation. However, the expected staining pattern for Iba1 (cyan) in microglia can still be observed by an experienced pathologist in mouse brain (all images) and used to place geometric ROIs.

### Legend

Iba1: cyan  
Gfap: yellow  
SYTO13: blue

### Stained Image Data

Exposure Time	300 ms
Signal-to-Noise	2.7
ROI Type	Geometric only

\* Recommendations above are meant to act as a starting point for your own experimental optimization

For more information, please visit [nanosttring.com/GeoMxDSP](https://nanosttring.com/GeoMxDSP)

#### NanoString Technologies, Inc.

530 Fairview Avenue North  
Seattle, Washington 98109

T (888) 358-6266  
F (206) 378-6288

[nanosttring.com](https://nanosttring.com)  
[info@nanosttring.com](mailto:info@nanosttring.com)

#### Sales Contacts

United States [us.sales@nanosttring.com](mailto:us.sales@nanosttring.com)  
EMEA: [europe.sales@nanosttring.com](mailto:europe.sales@nanosttring.com)

Asia Pacific & Japan [apac.sales@nanosttring.com](mailto:apac.sales@nanosttring.com)  
Other Regions [info@nanosttring.com](mailto:info@nanosttring.com)