



KRT7 (Cytokeratin)

Epithelial cells

Antibody Information

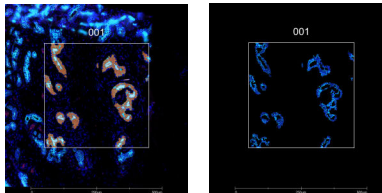
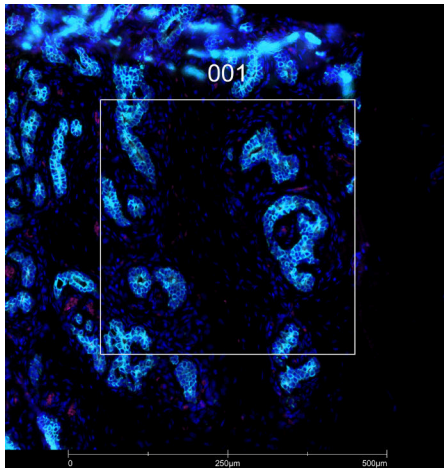
Clone ID	EPR1619Y
Fluorophore	AF647
Antibody Concentration	1 µg/mL
Mono or Polyclonal	Mono
Host & Isotype	Rabbit IgG
Lot Tested	GR3256051-3

Immunofluorescent Screening Information

Tissue Type	FFPE Human breast, fallopian tube, kidney, thyroid, placenta, liver
Section Thickness	5 µm
HIER	10 min 100°C
Proteinase K Concentration	1 µg/mL
Fixation/Embedding	FFPE

Vendor Information

Vendor	Abcam
Catalog Number/Web Link	ab192077



KRT7 (cyan) localizes to epithelial cells in human breast (left image). The expression pattern of these KRT7+ epithelial cells can be isolated from OCLN+ tight junctions (magenta) through GeoMx segmentation (right image).

Legend

KRT7: cyan
 OCLN: magenta
 SYTO13: blue
 Segmentation for KRT7: orange
 Segmentation for OCLN: white

Stained Image Data

Exposure Time	300 ms
Signal-to-Noise	25.8
ROI Type	Geometric or Segmented

* Recommendations above are meant to act as a starting point for your own experimental optimization

For more information, please visit nanosttring.com/GeoMxDSP

NanoString Technologies, Inc.

530 Fairview Avenue North
 Seattle, Washington 98109

T (888) 358-6266
 F (206) 378-6288

nanosttring.com
info@nanosttring.com

Sales Contacts

United States us.sales@nanosttring.com
 EMEA: europe.sales@nanosttring.com

Asia Pacific & Japan apac.sales@nanosttring.com
 Other Regions info@nanosttring.com