



# KRT8/18 (Cytokeratin)

## Epithelial cells

### Antibody Information

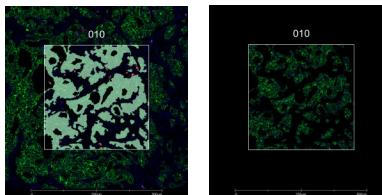
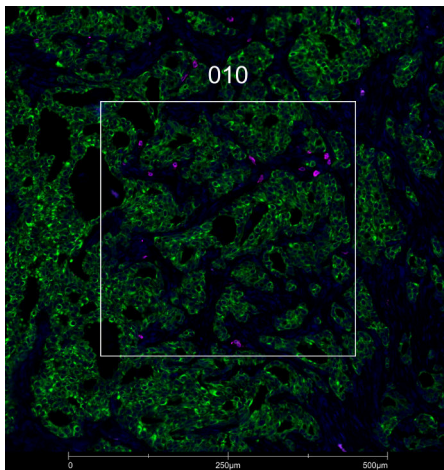
Clone ID	K8.8 + DC10
Fluorophore	AF594
Antibody Concentration	5 µg/mL
Mono or Polyclonal	Mono
Host & Isotype	Mouse IgG1 / IgG1 Kappa
Lot Tested	M5M6-691PABX210908-111021-AF594

### Immunofluorescent Screening Information

Tissue Type	FFPE Human tonsil, breast, colon, lung
Section Thickness	5 µm
HIER	10 min 100°C
Proteinase K Concentration	1 µg/mL
Fixation/Embedding	FFPE

### Vendor Information

Vendor	Novus
Catalog Number/Web Link	<a href="#">NBP2-34655AF594</a>



KRT8/18 (green) localizes to epithelial cells in human breast carcinoma (left image). The expression pattern of these KRT8/18+ epithelial cells can be isolated from CD103+ intra-epithelial lymphocytes (magenta) through GeoMx segmentation (right image).

### Legend

KRT8/18: green  
 CD103: magenta  
 SYTO83: blue  
 Segmentation for KRT8/18: light green  
 Segmentation for CD103: orange

### Stained Image Data

Exposure Time	300 ms
Signal-to-Noise	7.1
ROI Type	Geometric or Segmented

\* Recommendations above are meant to act as a starting point for your own experimental optimization

For more information, please visit [nanosttring.com/GeoMxDSP](https://nanosttring.com/GeoMxDSP)

#### NanoString Technologies, Inc.

530 Fairview Avenue North  
 Seattle, Washington 98109

T (888) 358-6266  
 F (206) 378-6288

[nanosttring.com](https://nanosttring.com)  
[info@nanosttring.com](mailto:info@nanosttring.com)

#### Sales Contacts

United States [us.sales@nanosttring.com](mailto:us.sales@nanosttring.com)  
 EMEA: [europe.sales@nanosttring.com](mailto:europe.sales@nanosttring.com)

Asia Pacific & Japan [apac.sales@nanosttring.com](mailto:apac.sales@nanosttring.com)  
 Other Regions [info@nanosttring.com](mailto:info@nanosttring.com)