



Laminin (Pan-Laminin)

Basement membrane

Antibody Information

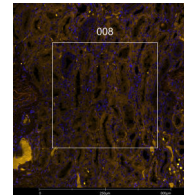
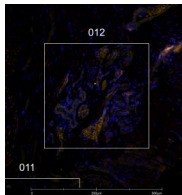
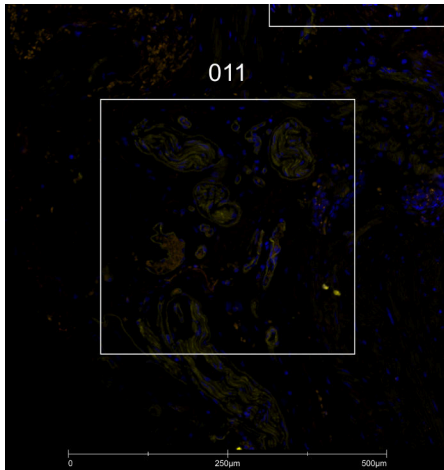
| | |
|------------------------|-------------------------|
| Clone ID | Polyclonal |
| Fluorophore | AF594 |
| Antibody Concentration | 10 µg/mL |
| Mono or Polyclonal | Poly |
| Host & Isotype | Rabbit IgG |
| Lot Tested | 197-072321-101921-AF594 |

Immunofluorescent Screening Information

| | |
|----------------------------|---------------------------------------|
| Tissue Type | FFPE Human placenta, breast, prostate |
| Section Thickness | 5 µm |
| HIER | 10 min 100°C |
| Proteinase K Concentration | 1 µg/mL |
| Fixation/Embedding | FFPE |

Vendor Information

| | |
|-------------------------|--------------------------------|
| Vendor | Novus |
| Catalog Number/Web Link | NB300-144AF594 |



The signal-to-noise ratio for this conjugate is not reliably high enough in our assay to allow for GeoMx segmentation. However, the expected staining pattern for Laminin (yellow) in basement membrane/extracellular matrix can still be observed by an experienced pathologist in human prostate (left and center images) as well as human kidney (right image) and used to place geometric ROIs.

Legend

Laminin: yellow
AQP1: cyan
SYTO13: blue

Stained Image Data

| | |
|-----------------|----------------|
| Exposure Time | 300 ms |
| Signal-to-Noise | 3.6 |
| ROI Type | Geometric only |

* Recommendations above are meant to act as a starting point for your own experimental optimization

For more information, please visit nanosttring.com/GeoMxDSP

NanoString Technologies, Inc.

530 Fairview Avenue North
Seattle, Washington 98109

T (888) 358-6266
F (206) 378-6288

nanosttring.com
info@nanosttring.com

Sales Contacts

United States us.sales@nanosttring.com
EMEA: europe.sales@nanosttring.com

Asia Pacific & Japan apac.sales@nanosttring.com
Other Regions info@nanosttring.com