



# MBP

## Myelin Basic Protein, all neurons

### Antibody Information

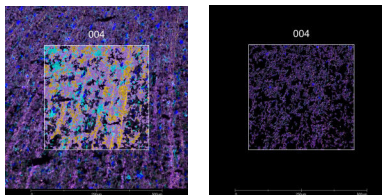
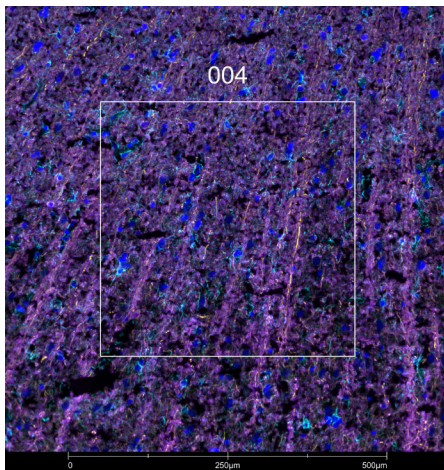
Clone ID	D8X4Q
Fluorophore	AF647
Antibody Concentration	0.5 µg/mL
Mono or Polyclonal	Mono
Host & Isotype	Rabbit IgG
Lot Tested	1

### Immunofluorescent Screening Information

Tissue Type	FrF Human brain
Section Thickness	5 µm
HIER	10 min 100°C
Proteinase K Concentration	1 µg/mL
Fixation/Embedding	fresh frozen / OCT

### Vendor Information

Vendor	Cell Signaling Technology
Catalog Number/Web Link	<a href="#">30103S</a>



MBP (purple) localizes to neurons in human brain (left image). The expression pattern of these MBP+ neurons can be isolated from GFAP+ astrocytes (cyan) and NEFH+ intermediate filaments (yellow) through GeoMx segmentation (right image).

### Legend

MBP: purple      GFAP: cyan  
 NEFH: yellow      SYTO13: grey  
 Segmentation for MBP: purple  
 Segmentation for GFAP: cyan  
 Segmentation for NEFH: yellow

### Stained Image Data

Exposure Time	200 ms
Signal-to-Noise	5.8
ROI Type	Geometric or Segmented

\* Recommendations above are meant to act as a starting point for your own experimental optimization

For more information, please visit [nanosttring.com/GeoMxDSP](https://nanosttring.com/GeoMxDSP)

#### NanoString Technologies, Inc.

530 Fairview Avenue North  
 Seattle, Washington 98109

T (888) 358-6266  
 F (206) 378-6288

[nanosttring.com](https://nanosttring.com)  
[info@nanosttring.com](mailto:info@nanosttring.com)

#### Sales Contacts

United States [us.sales@nanosttring.com](mailto:us.sales@nanosttring.com)  
 EMEA: [europe.sales@nanosttring.com](mailto:europe.sales@nanosttring.com)

Asia Pacific & Japan [apac.sales@nanosttring.com](mailto:apac.sales@nanosttring.com)  
 Other Regions [info@nanosttring.com](mailto:info@nanosttring.com)