



Nefh

Intermediate filaments, neurons

Antibody Information

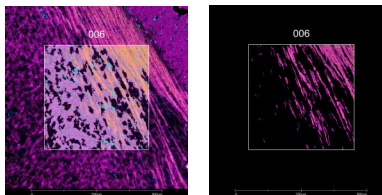
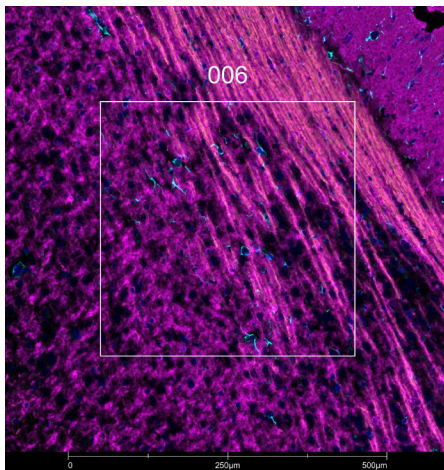
Clone ID	NF-01
Fluorophore	AF594
Antibody Concentration	2 µg/mL
Mono or Polyclonal	Mono
Host & Isotype	Mouse IgG1
Lot Tested	533157-111521-AF594

Immunofluorescent Screening Information

Tissue Type	FrF Mouse brain
Section Thickness	5 µm
HIER	10 min 100°C
Proteinase K Concentration	1 µg/mL
Fixation/Embedding	fresh frozen / OCT

Vendor Information

Vendor	Novus
Catalog Number/Web Link	NB500-416AF594



Nefh (yellow) localizes to intermediate filaments/neurons in mouse brain (left image). The expression pattern of these Nefh+ intermediate filaments can be isolated from Gfap+ astrocytes (cyan) and Mbp+ neurons (magenta) through GeoMx segmentation (right image).

Legend

Nefh: yellow Mbp: magenta
 Gfap: cyan SYTO13: blue
 Segmentation for Nefh: orange
 Segmentation for Mbp: purple
 Segmentation for Gfap: cyan

Stained Image Data

Exposure Time	300 ms
Signal-to-Noise	7.6
ROI Type	Geometric or Segmented

* Recommendations above are meant to act as a starting point for your own experimental optimization

For more information, please visit nanosttring.com/GeoMxDSP

NanoString Technologies, Inc.

530 Fairview Avenue North
 Seattle, Washington 98109

T (888) 358-6266
 F (206) 378-6288

nanosttring.com
info@nanosttring.com

Sales Contacts

United States us.sales@nanosttring.com
 EMEA: europe.sales@nanosttring.com

Asia Pacific & Japan apac.sales@nanosttring.com
 Other Regions info@nanosttring.com