



# OCLN

## Tight junctions

### Antibody Information

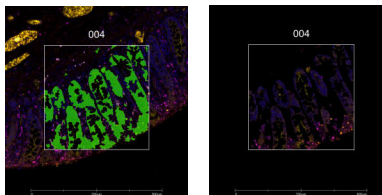
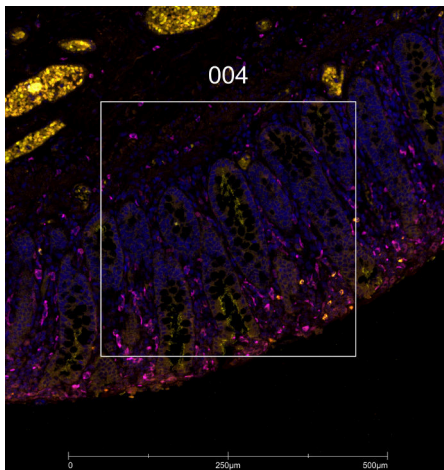
Clone ID	OCLN/2181
Fluorophore	AF594
Antibody Concentration	10 µg/mL
Mono or Polyclonal	Mono
Host & Isotype	Mouse IgG1 Kappa
Lot Tested	100506658-1PABX-21106-110921-AF594

### Immunofluorescent Screening Information

Tissue Type	FFPE Human colon, kidney, thyroid, fallopian tube
Section Thickness	5 µm
HIER	10 min 100°C
Proteinase K Concentration	1 µg/mL
Fixation/Embedding	FFPE

### Vendor Information

Vendor	Novus
Catalog Number/Web Link	<a href="#">NBP3-08879AF594</a>



OCLN (yellow) localizes to tight junctions in human colon (left image). The expression pattern of these OCLN+ tight junctions can be isolated from CD163+ M2 macrophages (magenta) through GeoMx segmentation (right image).

### Legend

OCLN: yellow  
 CD163: magenta  
 SYTO13: grey  
 Segmentation for OCLN: green  
 Segmentation for CD163: pink

### Stained Image Data

Exposure Time	300 ms
Signal-to-Noise	3.5
ROI Type	Geometric or Segmented

\* Recommendations above are meant to act as a starting point for your own experimental optimization

For more information, please visit [nanosttring.com/GeoMxDSP](https://nanosttring.com/GeoMxDSP)

#### NanoString Technologies, Inc.

530 Fairview Avenue North  
 Seattle, Washington 98109

T (888) 358-6266  
 F (206) 378-6288

[nanosttring.com](https://nanosttring.com)  
[info@nanosttring.com](mailto:info@nanosttring.com)

#### Sales Contacts

United States [us.sales@nanosttring.com](mailto:us.sales@nanosttring.com)  
 EMEA: [europe.sales@nanosttring.com](mailto:europe.sales@nanosttring.com)

Asia Pacific & Japan [apac.sales@nanosttring.com](mailto:apac.sales@nanosttring.com)  
 Other Regions [info@nanosttring.com](mailto:info@nanosttring.com)