



# TUBB3

## Microtubules in the central and peripheral nervous system

### Antibody Information

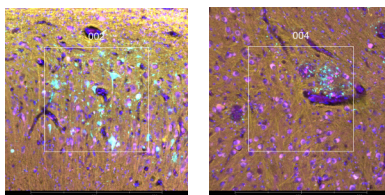
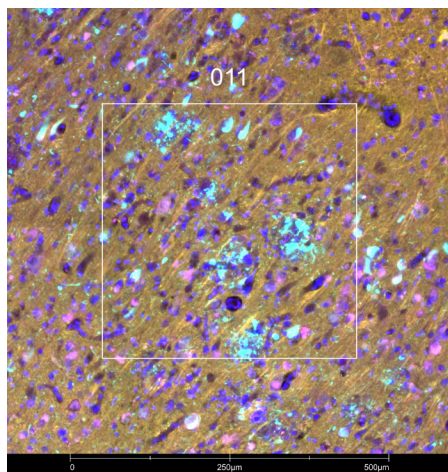
Clone ID	EP1569Y
Fluorophore	AF647
Antibody Concentration	0.5 µg/mL
Mono or Polyclonal	Mono
Host & Isotype	Rabbit IgG
Lot Tested	GR3286152-6

### Immunofluorescent Screening Information

Tissue Type	FFPE Human Alzheimer's diseased brain
Section Thickness	5 µm
HIER	10 min 100°C
Proteinase K Concentration	1 µg/mL
Fixation/Embedding	FFPE

### Vendor Information

Vendor	Abcam
Catalog Number/Web Link	<a href="#">ab190575</a>



The signal-to-noise ratio for this conjugate is not reliably high enough in our assay to allow for GeoMx segmentation. However, the expected staining pattern for TUBB3 (yellow) in microtubules can still be observed by an experienced pathologist in human Alzheimer's diseased brain (all images) and used to place geometric ROIs.

### Legend

TUBB3: yellow  
MAP2: magenta  
p-Tau T181: cyan  
SYTO83: blue

### Stained Image Data

Exposure Time	300 ms
Signal-to-Noise	1.9
ROI Type	Geometric only

\* Recommendations above are meant to act as a starting point for your own experimental optimization

For more information, please visit [nanosttring.com/GeoMxDSP](https://nanosttring.com/GeoMxDSP)

#### NanoString Technologies, Inc.

530 Fairview Avenue North  
Seattle, Washington 98109

T (888) 358-6266  
F (206) 378-6288

[nanosttring.com](https://nanosttring.com)  
[info@nanosttring.com](mailto:info@nanosttring.com)

#### Sales Contacts

United States [us.sales@nanosttring.com](mailto:us.sales@nanosttring.com)  
EMEA: [europe.sales@nanosttring.com](mailto:europe.sales@nanosttring.com)

Asia Pacific & Japan [apac.sales@nanosttring.com](mailto:apac.sales@nanosttring.com)  
Other Regions [info@nanosttring.com](mailto:info@nanosttring.com)