



# Tau - Phospho (T181)

## Neurons; Alzheimer's diseased brain plaques

### Antibody Information

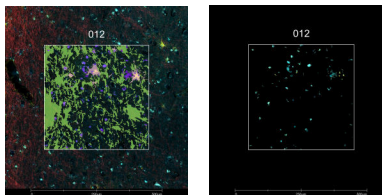
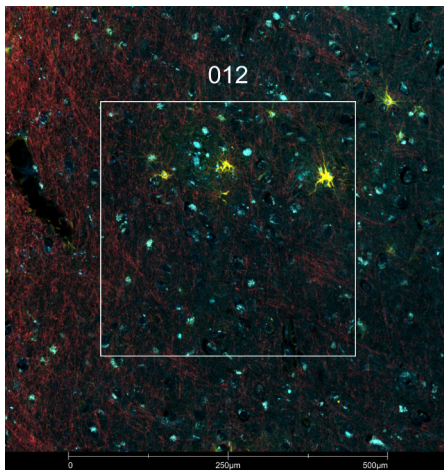
Clone ID	M7004D06
Fluorophore	AF488
Antibody Concentration	4 µg/mL
Mono or Polyclonal	Mono
Host & Isotype	Mouse IgG1 Kappa
Lot Tested	B294876

### Immunofluorescent Screening Information

Tissue Type	FFPE Human Alzheimer's diseased brain
Section Thickness	5 µm
HIER	10 min 100°C
Proteinase K Concentration	1 µg/mL
Fixation/Embedding	FFPE

### Vendor Information

Vendor	BioLegend
Catalog Number/Web Link	<a href="#">846610</a>



Phospho-Tau T181 (cyan) localizes to aggregates in human Alzheimer's diseased brain (left image). The expression pattern of these p-Tau T181+ aggregates can be isolated from GFAP+ astrocytes (yellow) and MBP+ neurons (red) through GeoMx segmentation (right image).

### Legend

p-Tau T181: cyan    MBP: red  
 GFAP: yellow    SYTO83: blue  
 Segmentation for p-Tau T181: purple  
 Segmentation for MBP: green  
 Segmentation for GFAP: pink

### Stained Image Data

Exposure Time	300 ms
Signal-to-Noise	3.7
ROI Type	Geometric or Segmented

\* Recommendations above are meant to act as a starting point for your own experimental optimization

For more information, please visit [nanosttring.com/GeoMxDSP](https://nanosttring.com/GeoMxDSP)

#### NanoString Technologies, Inc.

530 Fairview Avenue North  
 Seattle, Washington 98109

T (888) 358-6266  
 F (206) 378-6288

[nanosttring.com](https://nanosttring.com)  
[info@nanosttring.com](mailto:info@nanosttring.com)

#### Sales Contacts

United States [us.sales@nanosttring.com](mailto:us.sales@nanosttring.com)  
 EMEA: [europe.sales@nanosttring.com](mailto:europe.sales@nanosttring.com)

Asia Pacific & Japan [apac.sales@nanosttring.com](mailto:apac.sales@nanosttring.com)  
 Other Regions [info@nanosttring.com](mailto:info@nanosttring.com)