



Tau - Phospho (T181)

Neurons; Alzheimer's diseased brain plaques

Antibody Information

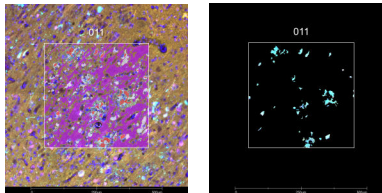
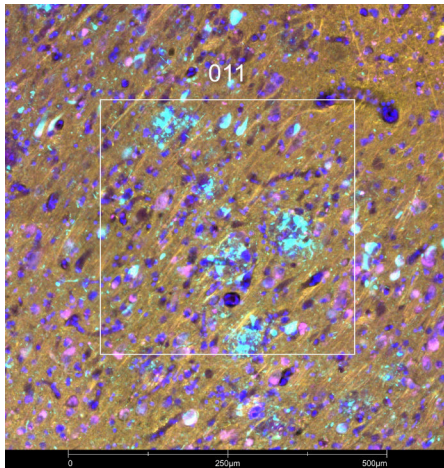
| | |
|------------------------|------------------|
| Clone ID | M7004D06 |
| Fluorophore | AF594 |
| Antibody Concentration | 4 µg/mL |
| Mono or Polyclonal | Mono |
| Host & Isotype | Mouse IgG1 Kappa |
| Lot Tested | B272640 |

Immunofluorescent Screening Information

| | |
|----------------------------|---------------------------------------|
| Tissue Type | FFPE Human Alzheimer's diseased brain |
| Section Thickness | 5 µm |
| HIER | 10 min 100°C |
| Proteinase K Concentration | 1 µg/mL |
| Fixation/Embedding | FFPE |

Vendor Information

| | |
|-------------------------|------------------------|
| Vendor | BioLegend |
| Catalog Number/Web Link | 846606 |



Phospho-Tau T181 (cyan) localizes to aggregates in human Alzheimer's diseased brain (left image). The expression pattern of these p-Tau T181+ aggregates can be isolated from TUBB3+ microtubules (yellow) and MAP2+ microtubules (magenta) through GeoMx segmentation (right image).

Legend

p-Tau T181: cyan TUBB3: yellow
 MAP2: magenta SYTO83: blue
 Segmentation for p-Tau T181: red
 Segmentation for TUBB3: purple
 Segmentation for MAP2: white

Stained Image Data

| | |
|-----------------|------------------------|
| Exposure Time | 300 ms |
| Signal-to-Noise | 16.4 |
| ROI Type | Geometric or Segmented |

* Recommendations above are meant to act as a starting point for your own experimental optimization

For more information, please visit nanosttring.com/GeoMxDSP

NanoString Technologies, Inc.

530 Fairview Avenue North
 Seattle, Washington 98109

T (888) 358-6266
 F (206) 378-6288

nanosttring.com
info@nanosttring.com

Sales Contacts

United States us.sales@nanosttring.com
 EMEA: europe.sales@nanosttring.com

Asia Pacific & Japan apac.sales@nanosttring.com
 Other Regions info@nanosttring.com