



Tubb3

Microtubules; Neurons

Antibody Information

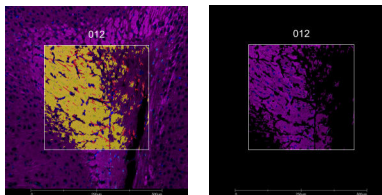
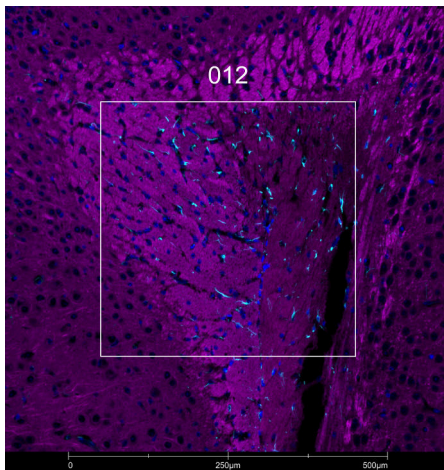
Clone ID	EP1569Y
Fluorophore	AF647
Antibody Concentration	0.5 µg/mL
Mono or Polyclonal	Mono
Host & Isotype	Rabbit IgG
Lot Tested	GR3286152-6

Immunofluorescent Screening Information

Tissue Type	FFPE Mouse brain
Section Thickness	5 µm
HIER	10 min 100°C
Proteinase K Concentration	1 µg/mL
Fixation/Embedding	FFPE

Vendor Information

Vendor	Abcam
Catalog Number/Web Link	ab190575



Tubb3 (magenta) localizes to neurons/microtubules in mouse brain (left image). The expression pattern of these Tubb3+ neurons can be isolated from Gfap+ astrocytes (cyan) through GeoMx segmentation (right image).

Legend

Tubb3: magenta
Gfap: cyan
SYTO13: blue
Segmentation for Tubb3: yellow
Segmentation for Gfap: red

Stained Image Data

Exposure Time	200 ms
Signal-to-Noise	8.4
ROI Type	Geometric or Segmented

* Recommendations above are meant to act as a starting point for your own experimental optimization

For more information, please visit nanosttring.com/GeoMxDSP

NanoString Technologies, Inc.

530 Fairview Avenue North
Seattle, Washington 98109

T (888) 358-6266
F (206) 378-6288

nanosttring.com
info@nanosttring.com

Sales Contacts

United States us.sales@nanosttring.com
EMEA: europe.sales@nanosttring.com

Asia Pacific & Japan apac.sales@nanosttring.com
Other Regions info@nanosttring.com